

2026

# Programme Handbook

Makeup, Skin Care and Beauty Therapy Programmes (Level 3-5)



# Rāraki Upoko – Contents

<b>Nau mai ki Ara – Welcome to Ara</b> .....	<b>4</b>
<b>Tō Rangi Tuatahi – Orientation &amp; Your First Day</b> .....	<b>6</b>
Your First Day 2026 .....	6
Equipment requirements .....	7
Logins .....	7
Timetable information .....	7
How to find your way around .....	7
<b>Korero Nui - Important Information</b> .....	<b>9</b>
Attendance .....	9
Non-Engagement .....	10
Drugs and Alcohol .....	11
Artificial Intelligence (AI) Tools .....	11
<b>Kā Raki whakahirahira - Important Dates</b> .....	<b>12</b>
<b>Kā whakapātaka - Contact Details</b> .....	<b>13</b>
<b>Taipitopito akoraka - Programme Details</b> .....	<b>15</b>
NZ3442 – New Zealand Certificate in Skincare and Cosmetics (Introduction) (Level 3)	15
NZ3444 – New Zealand Certificate in Beauty Therapy (Level 4).....	16
NZ3445 – New Zealand Diploma in Beauty Therapy (Level 5).....	18
<b>Kā tika me kā kaweka o te taura - Learner Responsibilities and Rights</b> .....	<b>21</b>
<b>Kā Taunakitaka Mōu – Support for You</b> .....	<b>25</b>
Quick reference – Where to find help if you have feedback or want to raise an issue .....	25
<b>Kā Aromatawai - Assessments</b> .....	<b>27</b>
Academic Integrity .....	27
The Grade Scale.....	30
<b>Kā tikaka aromatawai - Assessment Regulations</b> .....	<b>33</b>
Regulations Flowchart .....	33
Which form do I use? .....	33
Extensions.....	35
Late Submissions .....	35
Resits or resubmission of assessment tasks .....	35
Second Results (course level).....	35

Assessment in Te Reo Māori .....	35
Marks Carried Forward.....	36
Supported Assessment.....	36
Recognising Prior Knowledge and Skills .....	36
Alternative Arrangements .....	37
Aegrotat.....	37
Reconsideration of Assessment Decisions.....	37
Reconsideration of a Course Final Grade .....	37
Appeal of Reconsideration Decision .....	38
Conceded Pass .....	38
<b>Kā putaka me te Whakapōtaetaka - Results &amp; Graduation .....</b>	<b>39</b>
Accessing Your Results .....	39
Academic Transcripts.....	39
Access to Marked Assessments .....	39
Receiving Your Qualification .....	40
Graduation.....	40
<b>Kā ture me kā tikaka - Policies &amp; Procedures.....</b>	<b>41</b>
Academic Support and Progression.....	41
Formal Academic Contract       41	
Academic Misconduct.....	42
Plagiarism .....	42
Use of Artificial Intelligence (AI) Tools .....	42
Cheating .....	42
Dishonest Academic Practice.....	43
Educative Processes.....	43
Penalties.....	43
Probation .....	43
Exclusion .....	44
Suspension .....	44
Cancellation of Enrolment.....	44
Refusal of Future Enrolment.....	45
Copyright and Ara Learners .....	45
<b>Kā tū whare - Facilities .....</b>	<b>47</b>
Faculty related Health and Safety.....	47

**Kā rauemi - Resources .....47**  
**Appendix 1 .....48**  
Equipment Requirements .....48



# Nau mai ki Ara – Welcome to Ara

Kia ora

## **Welcome to the Faculty of Culture and Services.**

We have a long tradition of providing quality training by inspirational mentors. Our goal is to advantage you with courses that matter alongside tutors that are here to help and guide you. They are committed to your success so when you graduate, you're confident, work ready and equipped to succeed.

We work closely with our professional industry colleagues ensuring our programmes are exemplars of contemporary best practice.

Our training, along with your smile, your special attention to detail and awareness of guests and clients' needs, make your time spent here truly worthwhile. You'll be applying what you're learning to real tasks and projects in environments that mimic real workplaces preparing you for a career both nationally and internationally.

As a learner, you have access to a range of Ara facilities and services that are aimed at supporting your achievement. I encourage you to make the most of the all the opportunities offered. I am confident that your commitment to your education will result in a successful and fulfilling career.

I wish you all the best with your studies this year.

**Peter Sawyer**

**Dean - Faculty of Culture and Services  
2026**



# Kia rite ki te ako Getting ready for study



## Tō Rangi Tuatahi – Orientation & Your First Day

Are you ready for your first day of class? Check out your start date and where you need to be.

You can also find useful information on [MyAra](#). To access MyAra (from 21 days prior to your course beginning), you must have a current Ara network login and password. You can use [Ara Self-Service Password Reset](#) to activate your network account.)

### Your First Day 2026

#### **NZ Certificate in Skin Care and Cosmetics - Christchurch**

**Date:** Monday 20 July 2026, 9.00am  
**Venue:** S Block, Room S656, Madras Street Campus  
**Wear:** Tidy dress

#### **NZ Certificate in Beauty Therapy – Level 4 - Timaru**

**Date:** Monday 23 February 2026, 9.00am  
**Venue:** Room TF101, 32 Arthur Street, Timaru Campus  
**Wear:** Tidy dress

#### **NZ Certificate in Beauty Therapy – Level 4 – Christchurch**

**Date:** Monday 20 July 2026, 9.00am  
**Venue:** Paxus House, 144 High Street  
**Wear:** Tidy dress

#### **NZ Certificate in Beauty Therapy – Level 5 - Christchurch**

**Date:** Monday 23 February 2026, 9.00am  
**Venue:** Paxus House, 144 High Street  
**Wear:** Your Ara tunic and black dress pants with black closed toe shoes.  
Hair and makeup to be professional.

On your first day (orientation), you will be introduced to your tutors and new classmates, be given an overview of this programme, including:

- Welcome
- Programme overview and tour of Ara

- Course details
- Campus familiarisation
- Policies and procedures
- ICT access
- Programme handbook and timetable
- Cross Credit/Credit Transfer Advice

### **Returning students**

Please check your [timetable](#) for your first class details.

## **What you will need**

**Bring note taking items** – pens and highlighters.

## **Equipment requirements**

[For uniform and equipment requirements see Appendix 1.](#)

## **Logins**

If you need assistance with logins etc, contact ICT [ictservicesdesk@ara.ac.nz](mailto:ictservicesdesk@ara.ac.nz) or call 03 940 8800.

## **Timetable information**

All timetables are available on [MyAra](#).

## **How to find your way around**

Campus maps can be found [here](#).

## **Parking and bus information**

Campuses (excluding Manawa) have parking available. Payment and parking stickers may be required. Learn more about parking and biking. Or find out about bus services [here](#).

## **Ara Whakatau, your official welcome**

You are warmly invited to attend the official welcome to Ara for all learners, staff and whānau (family). The whakatau is a welcoming ceremony, similar to a

pōwhiri, involving mihi (speeches), waiata (song) and will conclude with kai timotimo (light refreshments).

Click [here](#) to find out when the whakataua will be.

## **International learners**

You will be invited to an international orientation as well as the programme orientation. You should attend both.

# Korero Nui - Important Information

## Programme Information Handbook

This handbook is heavy on detail and sometimes quite formal. There will be things you want to know and other things you will only refer to when something comes up.

Here are some quick highlights of what is in the following pages:

- The detail and the rules about the qualification you have enrolled in
- Ara expectations about how you will behave and what your rights are
- How Ara checks that you are a genuine student (like your attendance)
- A quick access guide to getting support
- How assessments work and the grades that are used
- The assessment regulations that could support you to pass and what forms to use (extensions, resits and more)
- Getting your results and going to graduation
- Key academic policies
- Health and safety information related to your study
- any after hours access arrangements

**Ask your tutor or Operations Administrator if you need help to find the information you are looking for.**

## Learner Information Handbook

We recommend that you read your Programme handbook in conjunction with the [Learner Information Handbook](#) (also available on MyAra) which has more detailed information about support and services available to learners at Ara.

## Attendance

Experience has shown that if you attend regularly and participate in the class activities and assessments you are more likely to succeed. Full attendance and commitment are encouraged. You are expected to be punctual and must comply with the various behaviour and safety requirements of classrooms, workshops and labs.

For an International learner satisfactory progress is defined as 100% attendance and successful completion of 75% or more of your courses.

**Let Ara know when you are absent from classes or if you are sick.**

**Contact your tutor or advise the faculty by emailing  
[HospitalityServices@ara.ac.nz](mailto:HospitalityServices@ara.ac.nz)**

## **Non-Engagement**

Ara has processes to deal with learners who formally enrol here but do not “engage” with their studies. That is, if you do not attend and/or participate and/or submit assignments and/or sit assessments or only attend briefly or spasmodically and/or do not engage significantly.

**Our Faculty process follows these steps if you are a no-show at the start of teaching:**

- 1** We will attempt to contact you 3 times and if we are not successful we will withdraw you (1) within 3 days if there is a waitlist of other learners who want to enrol, or (2) within 10% of the length of your enrolment (often 1 – 2 weeks)

---

- 2** You will receive an email, text or phone call asking why you have not been attending

---

- 3** There will be no academic or financial penalty from Ara but you could be overpaid by StudyLink

**Our Faculty process follows these steps for disengaged learners:**

- 1** The registers are checked and if your engagement and attendance is a concern, we will talk with you

---

- 2** You will receive an email or phone call asking why you have not been attending. You may receive a non-engagement letter

---

- 3** We will attempt to contact you three times

---

- 4** You may be placed on a Formal Academic Contract or withdrawn

---

- 5** You will receive a WD grade (after 10% of the duration of the course) or a DNC grade (after 80% of the duration of the course)

**If you are struggling with attendance, we fully encourage you to talk this over as soon as possible with your tutor.**

## **Drugs and Alcohol**

In line with the expectations of many workplaces, Ara has procedures to ensure the health and safety of all learners, staff and visitors, while undertaking Ara activities.

Many learning activities involve high-risk situations where clear thinking, decision-making, and machinery operation need to be conducted safely. These activities cannot be compromised.

You can download the policy from [CPP506 Drugs & Alcohol Policy](#)

## **Artificial Intelligence (AI) Tools**

When submitting work for assessment, you must adhere to Ara's Assessment and Academic Misconduct policies and not present AI such as ChatGPT as your own work. Learning Services have resources to help you learn to paraphrase or reference another person's work to avoid academic misconduct.

For more detail please read the [Kā ture me kā tikaka - Policies & Procedures](#) section of this handbook.

## Kā Raki whakahirahira - Important Dates

### SEMESTER ONE

### DATES

#### TERM 1

**23 February – 3 April**

Whakatau

Wednesday 4 March

Good Friday

Friday 3 April

Easter Monday

Monday 6 April

Easter Tuesday

Tuesday 7 April

#### TERM 2

**20 April – 3 July**

Anzac Day

Monday 27 April (Observed)

King's Birthday

Monday 1 June

Matariki

Friday 10 July

#### MID YEAR BREAK

**6 July – 17 July**

### SEMESTER TWO

### DATES

#### TERM 3

**20 July – 25 September**

South Canterbury Anniversary

Monday 28 September

#### TERM 4

**12 October – 27 November**

Labour Day

Monday 26 October

Canterbury Anniversary

Friday 13 November

## Kā whakapātaka - Contact Details

### Key Staff

**Ryan Marshall**

Portfolio Manager

(03) 940 8557

Room: U305

[Ryan.Marshall@ara.ac.nz](mailto:Ryan.Marshall@ara.ac.nz)



---

**Gretchen McKinley**

Operations Administrator

Room: U301A (Christchurch)

[Gretchen.McKinley@ara.ac.nz](mailto:Gretchen.McKinley@ara.ac.nz)

---

**Katherine Harris**

Operations Administrator

(03) 687 1807

Room: Student Central (Timaru)

[Katherine.Harris@ara.ac.nz](mailto:Katherine.Harris@ara.ac.nz)

---

**Student Advisors (Domestic/International)**

Student Central

X Block – Madras Street Campus

TA Block – Timaru Campus

[Learnersupport@ara.ac.nz](mailto:Learnersupport@ara.ac.nz)

---

## Teaching Staff

Name/Teaching area	Office	Email
<b>Bridgette Barwood</b> Timaru	TC206	<a href="mailto:Bridgette.Barwood@ara.ac.nz">Bridgette.Barwood@ara.ac.nz</a>
<b>Cheryl Butson</b> Christchurch	PX213	<a href="mailto:Cheryl.Butson@ara.ac.nz">Cheryl.Butson@ara.ac.nz</a>
<b>Heleen Craig</b> Timaru	TC206	<a href="mailto:Heleen.Craig@ara.ac.nz">Heleen.Craig@ara.ac.nz</a>
<b>Tracy Hutton</b> Christchurch	PX213	<a href="mailto:Tracy.Hutton@ara.ac.nz">Tracy.Hutton@ara.ac.nz</a>
<b>Tess Kerr</b> Christchurch	PX213	<a href="mailto:Tess.Kerr@ara.ac.nz">Tess.Kerr@ara.ac.nz</a>
<b>Annica Myburgh-Joubert</b> Timaru	TC206	<a href="mailto:Annica.Myburgh-Joubert@ara.ac.nz">Annica.Myburgh-Joubert@ara.ac.nz</a>
<b>Khrissy Paynter</b> Christchurch	PX213	<a href="mailto:Khrissy.Paynter@ara.ac.nz">Khrissy.Paynter@ara.ac.nz</a>
<b>Rachelle Sowman</b> Christchurch	PX213	<a href="mailto:Rachelle.Sowman@ara.ac.nz">Rachelle.Sowman@ara.ac.nz</a>
<b>Jamie Te Koeti</b> Christchurch	PX213	<a href="mailto:Jamie.Flynn@ara.ac.nz">Jamie.Flynn@ara.ac.nz</a>
<b>Jillian Ward</b> Christchurch	PX213	<a href="mailto:Jillian.Ward@ara.ac.nz">Jillian.Ward@ara.ac.nz</a>
<b>Tori Wright</b> Christchurch	PX213	<a href="mailto:Tori.F.Wright@ara.ac.nz">Tori.F.Wright@ara.ac.nz</a>

### Beauty Clinic, 144 High Street, Christchurch

Email: [treatments@ara.ac.nz](mailto:treatments@ara.ac.nz)

### Beauty Clinic, 32 Arthur St, Timaru

Phone Number: (03) 687 1863

Email: [Heleen.Craig@ara.ac.nz](mailto:Heleen.Craig@ara.ac.nz)

# Taipitopito akoraka - Programme Details

## NZ3442 – New Zealand Certificate in Skin Care and Cosmetics (Introduction) (Level 3)

### Programme Aim

This qualification is designed to provide the beauty sector with skin care and makeup technicians who have the foundation skills and knowledge to provide a range of makeup and skin care services. It is intended for school leavers or lifelong learners who wish to gain an entry level beauty therapy qualification and or pathway to further study.

### Graduate Profile

Graduates will be able to:

Comply with all professional standards and expectations relating to a makeup and skin care workplace including associated health, safety and hygiene obligations.

Consult with clients to establish their needs, and decide on and agree a range of possible makeup and/or skin care services and products, and an appropriate course of treatment.

Advise clients on the selection and use of appropriate cosmetics and toiletries and assist with sales and promotional activities within a makeup and skin care workplace.

Apply skills and knowledge of makeup and skin care services to meet client's needs in accordance with industry standards.

Identify symptoms of skin conditions in order to advise clients of their possible implications in terms of proposed skin care and makeup services.

Communicate professionally in a makeup and skin care workplace.

### Programme Regulations

The New Zealand Certificate in Makeup and Skin Care (Introduction) (Level 3) is a 19-week full time equivalent programme of study requiring the successful completion of 60 course credits.

The programme comprises 60 compulsory course credits at Level 3.

Minimum completion time: None specified (allowing for Recognition of Prior Learning, Cross Credit and Credit Transfer).

Maximum completion time: 2 years. Any extension to this period would require a written application from the Dean of Faculty or delegate.

## Programme Matrix

Use the following table as a guide to the courses in your programme. You can find out how many credits each course is worth, and how many credits and courses you need to do to complete your study.

Code	Course Title	Level	Credits	Course Factor
<b>Compulsory</b>				
CMSC301	Skin Care	3	30	0.2500
CMSC302	Professional Image and Conduct	3	15	0.1250
CMSC303	Makeup in the Clinic	3	15	0.1250
<b>Total</b>			<b>60</b>	<b>0.5000</b>

## NZ3444 – New Zealand Certificate in Beauty Therapy (Level 4)

### Programme Aim

This programme is designed to provide the beauty therapy industry with skilled therapists who have the knowledge and ability to competently perform a range of beauty treatments. It is intended for learners who have little or no prior learning or experience in beauty services.

### Graduate Profile

Graduates will be able to:

- Implement professional standards and expectations relating to the beauty workplace including all relevant health, safety and hygiene obligations.
- Undertake a full consultation with clients, build client rapport, and perform an in-depth need analysis for beauty services and product needs to develop a beauty treatment plan.
- Apply knowledge of natural nail services, products, and tools, and related skills, to meet client's needs in accordance with industry standards and current and emerging trends.

- Apply knowledge of facial and skin care services, and related skills, to meet client's needs, during and after treatment, in accordance with industry standards and current and emerging trends.
- Apply knowledge of manual hair removal and body care services, and related skills, to meet client's needs, during and after treatment, in accordance with industry standards and current and emerging trends.
- Apply knowledge of relevant aspects of chemistry, physics and biology in a beauty services context to provide effective services and ensure client comfort and safety.
- Provide nutritional advice specific to the skin which is complementary for healthy skin, hair and nails.
- Apply knowledge of skin and skin-related disease and disorders to identify symptoms and advise clients of possible implications in terms of proposed beauty services.
- Provide reception and client sales services and carry out associated transactions and administration.
- Contribute to the operation of a small beauty sector business or client base.

### **Education pathway**

- This qualification may build on the New Zealand Certificate in Makeup and Skin Care (Introduction) (Level 3), and may lead to the:
- New Zealand Diploma in Beauty Therapy (Level 5) [Ref: 3445]

### **Employment pathway**

Graduates of this qualification may be employed in positions such as:

- Beauty therapist
- Cosmetic product company representative

## **Programme Regulations**

The New Zealand Certificate in Beauty Therapy (Level 4) is a one-year full time equivalent programme of study requiring the successful completion of 120 compulsory course credits.

Minimum completion time: None specified (allowing for Recognition of Prior Learning, Cross Credit and Credit Transfer)

Maximum completion time: Three years. Any extension to this period would require a written application from the Dean of Faculty or delegate.

## Programme Matrix

Use the following table as a guide to the courses in your programme. You can find out how many credits each course is worth, and how many credits and courses you need to do to complete your study.

Code	Course Title	WIL*	Level	Credits	Course Factor
<b>Compulsory</b>					
CBTP301	Professional Practice	0	3	15	0.1250
CBTM401	Makeup Services	10	4	15	0.1250
CBTF402	Facial Treatments	10	4	15	0.1250
CBTN403	Nail Services	10	4	10	0.0834
CBTW404	Waxing Services	10	4	15	0.1250
CBTC405	Cosmetic Enhancements	10	4	10	0.0833
CBTB406	Beauty Therapy Clinic	10	4	10	0.0833
CBTA407	Anatomy and Physiology	0	4	15	0.1250
CBTR408	Relaxation Massage	10	4	15	0.1250
<b>Total</b>		<b>70</b>		<b>120</b>	<b>1.0000</b>

\*Work integrated learning

## NZ3445 – New Zealand Diploma in Beauty Therapy (Level 5)

### Programme Aim

This programme is designed to provide the beauty sector with therapists who have the skills and knowledge to critically analyse clients' needs and provide advanced beauty services. This programme is intended for learners who have prior learning or experience as a beauty therapist to equip them with the skills and knowledge to successfully provide advanced beauty services and manage the operations of a client based or small beauty therapy business.

## Graduate Profile

Graduates will be able to:

- Implement professional standards and expectations relating to advanced beauty services including all relevant health, safety and hygiene obligations.
- Undertake an in-depth consultation and build rapport with clients to analyse and evaluate their needs and develop and manage a treatment plan for advanced beauty services.
- Apply knowledge of advanced skin care services and products, and related skills, to meet client's needs, during and after treatment, in accordance with industry standards and current and emerging trends.
- Apply knowledge of advanced body therapy services and products, and related skills, to meet client's needs, during and after treatment, in accordance with industry standards and current and emerging trends.
- Apply knowledge of advanced hair removal services and products, and related skills, to meet client's needs, during and after treatment, in accordance with industry standards and current and emerging trends.
- Apply knowledge of relevant aspects of chemistry, physics and biology in an advanced beauty services context to provide effective services and ensure client comfort and safety.
- Manage the operation of a small beauty sector business or client base.
- Apply knowledge of skin and body diseases and disorders in order to identify symptoms, provide information and advice, and refer clients to health practitioners in accordance with industry standards relating to scope of practice.
- Provide nutritional advice which is complementary to advanced beauty services.

## Programme Regulations

The New Zealand Diploma in Beauty Therapy (Level 5) is a one-year full time equivalent programme of study requiring the successful completion of 120 compulsory course credits.

Minimum completion time: None specified (allowing for Recognition of Prior Learning, Cross Credit and Credit Transfer).

Maximum completion time: Three years. Any extension to this period would require a written application from the Dean of Faculty or delegate.

## Programme Matrix

Use the following table as a guide to the courses in your programme. You can find out how many credits each course is worth, and how many credits and courses you need to do to complete your study.

Code	Course Title	WIL*	Level	Credits	Course Factor
<b>Compulsory</b>					
DBTP511	Professional Business Standards	10	5	15	0.1250
DBTB512	Advanced Beauty Services 1	10	5	15	0.1250
DBTB522	Advanced Beauty Services 2	10	5	15	0.1250
DBTS523	Advanced Body Therapies	10	5	15	0.1250
DBTE514	Electrology 1	0	5	15	0.1250
DBTE524	Electrology 2	10	5	15	0.1250
DBTA525	Anatomy and Physiology with Nutrition	0	5	20	0.1667
DBTC526	Beauty Sector Clinic	20	5	10	0.0833
<b>Total</b>		<b>70</b>		<b>120</b>	<b>1.0000</b>

\*Work integrated learning

# Kā tika me kā kaweka o te tauira - Learner Responsibilities and Rights

## Learner Responsibilities and Rights

The Ara community consists of a diverse range of people and cultures, and we respect all members of our community. Our aim is to have a community where learners respect themselves and others, a community where healthy social interactions and academic pursuits are expected. To create and maintain the best possible teaching and learning environment, you are protected by basic rights and are expected to respect the rights and responsibilities of others.

### Useful Contacts:

Independent Student Advocate: Duncan Dunbar

Email: [duncan.dunbar@ara.ac.nz](mailto:duncan.dunbar@ara.ac.nz)

Student Voice Coordinator:

Email: [studentvoice@ara.ac.nz](mailto:studentvoice@ara.ac.nz)

## Your Responsibilities as a Learner

As a learner here, Ara expects you to:

### Behave safely

- Take care when using equipment and facilities.
- Wear suitable clothing.
- Follow health and safety guidelines and instructions.
- Not endanger yourself or others.
- Follow relevant professional guidelines.
- Ensure you are not intoxicated or under the influence of drugs on Ara premises or when involved in Ara related activities both formal and informal, with your programme, field trips, internships etc.

### Respect others

- Be sensitive to personal, social, and cultural differences.
- Respect the needs, rights, and freedoms of others.
- Help to uphold the integrity of Ara qualifications by discouraging/reporting dishonest practices.

### **Observe Ara rules**

- Behave appropriately for a tertiary education environment.
- Genuinely attempt to meet all course requirements including financial obligations.
- Comply with visa requirements.
- Be honest when completing assignments/other assessments.
- Comply with requirements of programme handbooks.
- Follow Ara policies and regulations (refer: [Ara Policy Library](#)).

## **Your Rights as a Learner**

Ara will protect your right to fairness. You have a right to:

### **Fairness**

- Open and accurate information.
- Fair evaluation and assessment.
- Have any problems handled as quickly as is practical and consistent with 'natural justice'.
- Personal privacy.
- Support, representation, and advocacy.

### **Ara Respects your right to:**

- Academic freedom, defined as 'freedom, within the law, to question and test received wisdom, to put forward new ideas and to state controversial or unpopular opinions.' (Education and Training Act 2020)
- Freedom from any form of harassment, bullying, or unjust discrimination.
- Respect for personal, social, and cultural differences.
- Representation in the development, implementation, and review of policies.

### **Ara will protect your right to Standards:**

- Study programmes that meet internal and external standards for approval and registration.
- To have competent and effective teachers.
- Appropriate support services delivered in a professional manner.
- Facilities and resources that meet or exceed Health & Safety legislation.

### **Concerns / Complaints:**

Your rights will be upheld by Ara management. If you think they have been infringed, in the first instance please contact your course tutor. If it is not appropriate to contact your tutor regarding your complaint, or the matter has not been resolved, please contact your Portfolio Manager or Student Advocate and/or the Student Life Team.

## Unacceptable Behaviour for Learners, or Visitors at Ara

The following are examples of behaviour which are not acceptable for anyone (learners, or visitors), at Ara or involved in Ara related activities:

- Breaking any NZ law (e.g., assault, theft).
- Any form of cheating (including plagiarism and other dishonest practices).
- Misuse of technology, software, hardware, or communication systems provided by Ara (refer Ara Code of Conduct for ICT Users in particular).
- Any form of harassment, bullying, or unjust discrimination including social media.
- Unacceptable sexual behaviour (e.g., sexual harassment, accessing pornography/other restricted material).
- Misuse of alcohol, drugs or other substances affecting behaviour, health, or safety.
- Smoking (including vaping) on Ara campuses. (Ara is a smoke free campus).
- Violence or threats of violence.
- Vandalism or other abuse of facilities and buildings.
- Disruptive behaviour in class (e.g., arriving late, use of any electronic device, interfering with the learning of other individuals).
- Inductions (informal) are not permitted at Ōtautahi House or on other Ara premises and are strongly and expressly discouraged by Ara.
- The above is not an exhaustive list of unacceptable behaviours. Where appropriate, Ara reserves the right to contact or report to external authorities.

Academic staff have the responsibility to maintain a safe and effective learning environment.

They may ask you to leave the class if your behaviour indicates limited ability to be safe, disturbance to others learning, or puts others at risk.

Ara takes this code of conduct seriously. Your marks, reports, and references may include an assessment of your behaviour, as well as your educational achievement. Serious infringement may lead to probation, suspension, or cancellation of a current enrolment and/or refusal of a future enrolment (see relevant policies). This may be referred to an appropriate external authority e.g., NZ Police

## **Learner Behaviour in class / classroom maintenance**

Be respectful of other learners and the classroom environment, following classroom specific rules and requirements. To avoid any distractions, you must ensure any electronic device you have on you/with you is diverted, not set to ring, or switched off. Both staff and students have a responsibility to ensure this happens

## **Dress Code**

At Ara there is no written dress code, but you are expected to attend classes dressed in a way which is generally acceptable. However, you're expected to be "dressed for the occasion" when going on a site visit or undertaking a Cooperative Education Project. You may be prevented from going on site visits if the staff member is of the opinion that you're not dressed for the occasion.

In this programme, a "dress code" and standard is required, as follows:

- Black flat shoes
- Black socks
- Black dress trousers
- Uniform top

## Kā Taunakitaka Mōu – Support for You

### Quick reference – Where to find help if you have feedback or want to raise an issue

The Education (Pastoral Care of Tertiary and International Learners) Code of Practice sets out the expectations that tertiary education organisations need to consider how their overall systems and resources support learners' wellbeing and safety.

For more detailed information on the code, and support areas listed below, please refer to the [Learner Information Handbook](#) on MyAra.

Support Area	Details	People	Links
<b>Faculty Staff</b>	This team are your first port of call for issues impacting your ability to study	Tutors Portfolio Manager	<a href="#">Contacts</a>
<b>Student Reps</b>	Student reps are invited to attend student rep meetings within your faculty where they can raise issues on your behalf	Student Voice Posters of your student reps are displayed in your faculty	<a href="#">Student Voice</a>
<b>Student Services</b>	Ara offers a wide range of student services	Student Advisors Health Centre Student Voice	<a href="#">Student Support</a>
<b>Te Pae Ora</b>	A wellbeing hub for ākonga		<a href="#">Te Pae Ora   Te Pūkenga</a>
<b>Independent Student Advocate</b>	Student Advocacy is available to assist you if you are facing difficulties within or beyond Ara that could affect your study	Duncan Dunbar 027 273 6246 <a href="mailto:Duncan.Dunbar@ara.ac.nz">Duncan.Dunbar@ara.ac.nz</a> X106 (Rakaia Centre)	<a href="#">Student Advocacy</a>

Support Area	Details	People	Links
<b>Complaints Process</b>	Ara has a process to support you and respond if you have a concern or complaint about a course, tutor, or another aspect of your programme	Complaints Co-ordinator	<a href="#">CPP117-Raising-problems-or-complaints</a> <a href="#">CPP117a-Raising-problems-or-complaints-form</a>
<b>SafePlace</b>	SafePlace is the tool we use to report risks, accidents and other incidents	Safety & Wellbeing Co-ordinator Safety & Wellbeing Business Partner	<a href="#">SafePlace FAQ for Learners</a>
<b>Important Policies</b>	All Ara Corporate and Academic Policies can be found at <a href="#">Ara Policy Library</a>		<a href="#">Student Rights and Responsibilities</a> <a href="#">Addressing Bullying, Harassment and Discrimination</a>

# Kā Aromatawai - Assessments

## Assessment Information

At the start of each course, you will be given a **Course Outline**. Before each assessment you will be given an **assessment brief**. They will show:

The number, type, and due dates for all assessments, including tests and assignments, and will give you details on:

- The weighting of each assessment in your course that contributes to your final grade, if applicable.
- The assessment policy for resits, second results and alternative assessments, if they are different from the policies in this document.
- The time frame for getting your marked assessments back from tutors, if they are different from those stated in this document.
- The penalties for handing assessments in late, if they are different from those stated in this document. These may be different for each course.

If you do not receive this information, talk to the course tutor or Academic Manager.

## Assessment Types

**Formative assessment** Verbal and written feedback that takes place throughout classes and the programme.

---

**Summative assessment** Assessments throughout the year that are based on learning outcomes for the course and determine how well you have achieved each outcome. You are given grades and written feedback. These assessments may include practical tests and projects.

The contents of the course work will be explained by the tutor for each course. If at any point your tutor or Academic Manager is concerned about your progress, they will let you know.

## Academic Integrity

Ara requires learners to be honest and act with integrity in their learning and assessments.

You are required to:

- present your own original work for assessment
- acknowledge contributions from other sources by using the referencing format required for the programme (failure to do this correctly may be regarded as plagiarism); this includes direct copying, paraphrasing, summarising, and the rearranging of, another person's words or idea/s
- not cheat in tests or examinations
- ensure you follow all instructions and the correct procedures (e.g., no use of mobile phones or personal electronic devices)
- not enter into any agreements with other learners to collude on assignments
- collaborate only as permitted
- not over- or misrepresent the individual contributions of members of any group assignment
- not knowingly help others to cheat
- not present another person's assessment as your own (this includes purchased assessments) j
- not act or behave in a way that prevents others from completing their assessments
- keep written and electronic work secure to prevent others from accessing and copying work. (2)

Any exceptions to the above are clearly stated in the information and requirements for the course.

By enrolling at Ara, you agree to your work being reviewed by various means to confirm an assessment is your own work. This includes the use of similarity detection software.

Any breaches of academic integrity follow the process set out in the academic integrity procedures. For more detailed information, please refer to the [Academic Integrity Policy](#)

## Submitting Your Work

Your tutors will let you know if they have guidelines for presenting your assessments and how to submit your work. Use a computer to create your assessments.

You may be required to submit your work manually or electronically. If you submit your work electronically, keep a copy until your official results are published at the end of the semester. If you have any questions, contact your tutor.

**Note:** Ara uses as part of its assessment processes electronic plagiarism detection. You will, from time to time, be required to submit assessments for scanning. Electronic copies of assessments must be retained by you until the official results are published after the end of semester or year.

## Quality Assurance

Your assessments and exam scripts may be used for internal and external moderation, monitoring, programme reviews, aegrotats, and the resolution of academic appeals and complaints. This helps Ara meet internal and external academic quality assurance requirements. If your assessments are used this way, before they are used, any information that could reasonably be expected to identify you will be removed.

## The Grade Scale

The various assessments within a course will be combined according to the weightings shown in the course descriptor, and a grade for the course as a whole will be assigned from the table shown below. A "C-" grade and above represents a pass for the course.

The following grade scale (G29aa) will be used for all courses on the programmes unless advised otherwise in the course descriptor:

## Marked Grades

Grade	Mark range	Pass or fail
A+	90-100	Pass
A	85-89	Pass
A-	80-84	Pass
B+	75-79	Pass
B	70-74	Pass
B-	65-69	Pass
C+	60-64	Pass
C	55-59	Pass
C-	50-54	Pass
D	40-49	Fail
E	0-39	Fail

## Other Grades

Other grades that may be awarded for particular circumstances in achievement based courses include:

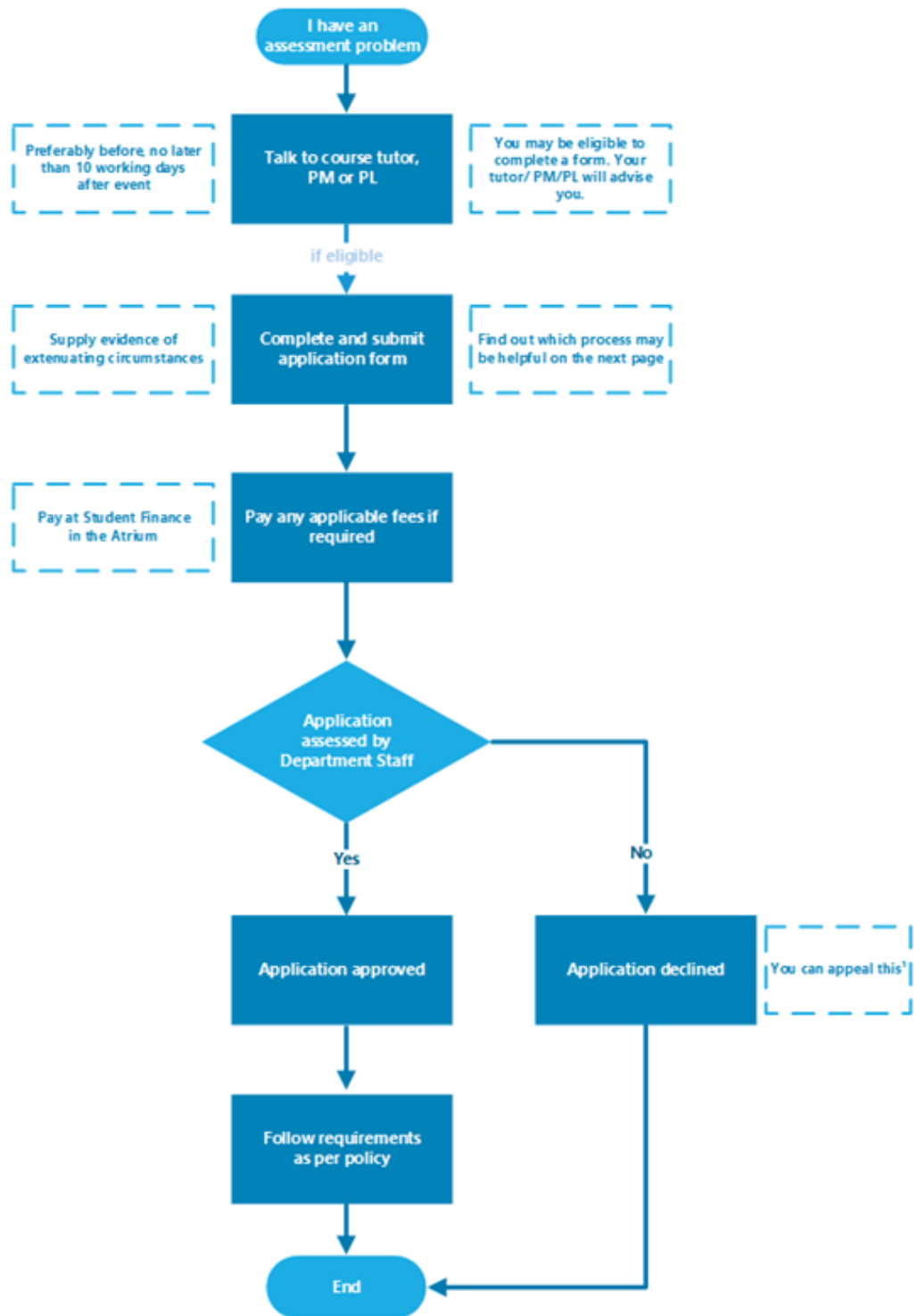
Course result	Grade	Description
Pass	Pass	Awarded pass and no appropriate grade can be awarded
Fail	Fail	Not passed and no appropriate grade can be awarded
Credit Transfer	CT	Course credit awarded by credit transfer
Cross Credit	CC	Course credit awarded by cross credit
Recognition of Prior Learning	P	Course credit awarded by Recognition of Prior Learning
Did not complete	DNC	Did not complete course requirements
Withdrawn	W	Formal withdrawal within the non-academic penalty period
Aegrotat	AEG	Awarded pass following consideration of impaired performance / aegrotat application. Where a grade is able to be determined AEG (Grade) will be recorded.
Restricted pass	RP	Where a course was narrowly failed (45-49%) and is compensated by overall good performance in the relevant subject. It cannot be used to meet pre-requisite requirements
Conceded Pass	CON	Where there is considerable evidence that marginal failure (45-49%) in one course is compensated by good overall performance. Only one conceded pass may be granted to a learner towards a particular qualification

Conditional Pass CP

Where a course was narrowly failed (45-49%) and an agreed portion of work or assessment is to be completed.

# Kā tikaka aromatawai - Assessment Regulations

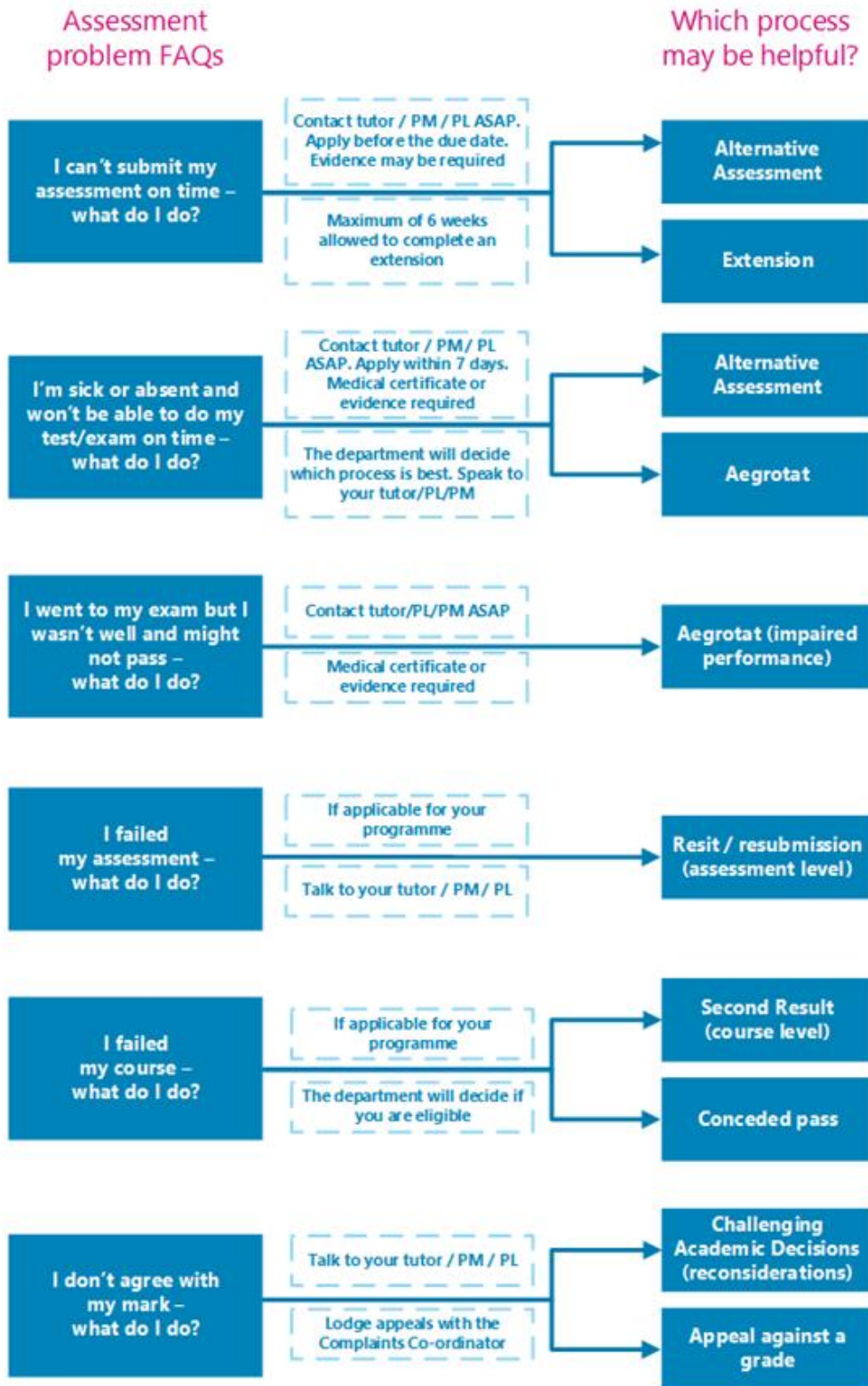
## Regulations Flowchart



\*The student lodges the appeal in writing with the Complaints Co-ordinator with a copy to the Head of Department

# Which form do I use?

*\* Always speak to your tutor, Programme Manager (PM) or Programme Leader (PL) to see if you are eligible*



## Extensions

If you anticipate difficulty in submitting assessments by the due time and date you may be able to request an extension.

For information about how to apply for an extension of time, see [Assessment Policy](#) - scroll down and find **3.14 Extensions**. You can download the form from [Application for Extension of Time](#)

## Late Submissions

Other than approved extensions, late submissions will have 10% deducted for each day (or part thereof) of lateness up to a maximum of five days after it was due. If an assessment is submitted more than five days after it was due, it will not be marked unless special circumstances are approved by the HoD.

Unless approved, we will not accept the assessment and a Not Passed (NP) or equivalent failing grade will be assigned.

## Resits or resubmission of assessment tasks

If you have submitted and failed an assessment task you may be able to apply for a resubmission resit

For information about how to apply for a resit or resubmission, see [Assessment Policy](#) - scroll down and find **3.15 Resits and Resubmissions**. You can download the form from [Application for Resit or Resubmission](#)

## Second Results (course level)

If you receive a fail grade in a course, you may be able to apply for a reassessment of the course.

For information about how to apply for a second result, see [Assessment Policy](#) - scroll down and find **3.16 Second Results**. You can download the form from [Application for Second Result](#)

## Assessment in Te Reo Māori

You can request to have your assessments conducted in Te Reo Māori, except where the task requires English language or other language capability. Other exceptions may apply.

For information about how to apply for assessment in Māori see [Assessment Policy](#) - scroll down and find **3.4 Assessment in Te Reo Māori**.

## Marks Carried Forward

You may be able to apply to carry marks forward for completed assessments to the next available occurrence of the course and not redo those assessments.

For information about how to apply for marks carried forward, see [Assessment Policy](#) - scroll down and find **3.18 Marks Carried Forward**. You can download the form from [Marks Carried Forward Application form](#).

## Supported Assessment

You may be able to apply for special assistance in order to undertake an assessment.

For more information about how to apply for additional assessment arrangements for disabled learners, see [Assessment Policy](#) - scroll down and find **3.19 Procedures for additional assessment arrangements for disabled learners**.

## Recognising Prior Knowledge and Skills

If you believe that a qualification, course or unit standard you have previously completed a recognised educational institution, or work/life experience, may be relevant to the qualification you are studying, you could apply for recognition of your prior knowledge and skills.

The previous grade is carried forward for any Cross Credit or Credit Transfer, and the Pass (P) grade given where a standard grade cannot be stated.

For information about how to apply for credit recognition, see [Credit Recognition](#). You can download the form from [Credit Recognition Application](#).

## Alternative Arrangements

If you are unable to sit a test or exam on the scheduled date, or complete an assessment on the due date, you may be able to apply for an alternative assessment

For information about how to apply for an alternative assessment see [Assessment Policy](#) - scroll down and find **3.13 Alternative Assessment Arrangements**. You can download the form from [Application for Alternative Time for Test / Exam](#)

## Aegrotat

You may be able to apply for an aegrotat when illness, injury, bereavement, childbirth, or other unforeseen critical circumstances occur on or immediately prior to the day of assessment and prevent you from attending the assessment or seriously impair your performance during the assessment itself.

For information about these regulations, see [Aegrotat Pass Regulations](#) You can download the form from [Aegrotat Application](#) and the Practitioner Statement form from [Aegrotat Practitioner Statement](#).

## Reconsideration of Assessment Decisions

If you have reason to believe that the mark for a particular assessment is incorrect you may be able to apply for a reconsideration.

For information about challenging academic decisions (reconsideration), see Challenging Academic Decisions (Reconsideration) [Assessment Policy](#) - scroll down and find **3.20 Reconsiderations and Appeals**. You can also refer to [Reconsiderations and Appeals](#)

## Reconsideration of a Course Final Grade

If you have reason to believe that the grade for a particular assessment is incorrect you may be able to apply for a reconsideration.

For information about challenging academic decisions (reconsideration), see Challenging Academic Decisions (Reconsideration) [Assessment Policy](#) - scroll down and find **3.20 Reconsiderations and Appeals**. You can also refer to [Reconsiderations and Appeals](#)

## Appeal of Reconsideration Decision

If you consider that the outcome of the reconsideration process is incorrect or unfair, or a reconsideration is not available, you may appeal against the final grade awarded.

For information about challenging academic decisions (reconsideration), see [Assessment Policy](#) - scroll down and find **3.20 Reconsiderations and Appeals**. You can also refer to [Reconsiderations and Appeals](#).

## Conceded Pass

You may qualify for a conceded pass if you marginally fail a course.

For information about conceded passes, see [Assessment Policy](#) - scroll down and find **3.17 Conceded Pass**.

# Kā putaka me te Whakapōtaetaka - Results & Graduation

## Accessing Your Results

Results of individual assessments will be made available to you within fifteen (15) working days of your assessment due date.

These results may be returned to you in class or online. Final grades for each course will be available online within fifteen (15) working days of the end date of the course and accessible through My Ara at [MyAra](#) or through the My Ara app.

Any results displayed publicly will use unique identifiers such as student ID numbers, not student names.

**Note:** Staff members are under no obligation to advise you of your final grade for a course. After you have completed all the assessments in a course, we ask that you allow the staff time to complete the marking. At the end of semester staff members are under great pressure to submit final results to Academic Records so that they can be processed and then made available to all learners as soon as possible.

## Academic Transcripts

If you require your results to be printed, visit Central Academic Records (CAR) in A121 or email [academic.records@ara.ac.nz](mailto:academic.records@ara.ac.nz) to request a transcript.

## Access to Marked Assessments

You are entitled to access your written work submitted for assessment.

Where assessed work is to be returned, time limits for collection will be advised by the faculty.

You may view copies of your examinations, but these are retained by Ara. Any time or access limitations will be advised by the faculty.

Please note that in order to meet internal and external academic quality assurance requirements, learner assessments and examination scripts may be used for the purposes of:

- internal and external moderation
- programme review
- aegrotats (if available)
- resolution of academic appeals and complaints

Assessments used for these purposes will have information, which could reasonably be expected to identify the individual removed before they are copied and used.

## Receiving Your Qualification

Once you have successfully completed your approved programme of study you will receive a notification advising you that your certificate is ready and will be posted to you.

**Note:** Please make sure your address details are up to date when you finish studying. Advise Academic Records if you are updating your address details after you receive the notification, so the correct address is used.

## Graduation

We hold several graduation ceremonies.

If you're eligible to graduate, you'll receive a communication from Ara advising you of this. You'll need to complete the online graduation form, by the date indicated, to register for your ceremony.

**Note:** If you believe you are entitled to graduate and do not hear from Ara please contact the Operations Administrator or Academic Records.

For all information on graduation, including dates, please see [Graduation](#)

## Academic Policies

All policies are accessible on the Ara website All policies are accessible on the Ara website [Ara Policy Library](#). Ara provides a student advocacy service.

It is well known that people learn better when they work together, and this is encouraged, but when it comes to assessment, collaboration (working together) is not permitted unless it is a formal part of the assignment set by the tutor(s). Each learner is also responsible for making sure his/her work is not able to be copied by others. Sharing or comparing tests, exams and assessments is prohibited and, if detected, will be treated as “academic misconduct”.

## Academic Support and Progression

Support is available if you, as a learner, are having difficulty meeting academic standards or you seek guidance, assistance or support with study related matters.

If you are not achieving satisfactorily, you will receive specifically targeted advice and assistance at an early stage.

Academic staff members will work with you if you are not meeting academic standards to document and implement a plan. This will include identifying and monitoring goals, expected academic progress, timelines and support.

If satisfactory progress is not made then you will be invited to meet with the Dean of Faculty or their delegate, who will explain the circumstances, discuss the consequences, and give you the opportunity to present your view of events leading up to the meeting. Depending on the outcome of the meeting, a Formal Academic Contract may be entered into.

## Formal Academic Contract

If your progress as a learner in a current course is still considered by tutors to not be satisfactory you will be invited to a meeting and advised in writing by the Dean of Faculty or delegate.

The Formal Academic Contract will record the deficiencies or concerns, the progress which must be met, any assistance available, the time within which progress or change must be demonstrated, and the method and criteria by which such progress or change will be measured.

For more information about Academic Support and Progression, see [Academic Support and Progression](#) - scroll down and find **3.3 Formal Academic Contract**.

## Academic Misconduct

Cheating, plagiarism and other dishonest academic practices have serious consequences in this programme and if you fail to meet academic standards you, as a learner, may be subject to educative processes or penalties.

### Plagiarism

Copying, taking or using someone else's work or ideas and presenting them as if they were your own original work or thought, without clear acknowledgement of the actual source.

### Use of Artificial Intelligence (AI) Tools

Generative Artificial Intelligence (AI) services such as ChatGPT can be used for learning. When submitting work for assessment, you must adhere to Ara's Assessment and Academic Misconduct policies. In relation to AI, this means;

- you must not present any output from any AI services as your own work in your assessment.
- you must use your own words.
- if you paraphrase or quote from a source such as a textbook, website and AI service, you must reference correctly.

If you submit an assessment using content copied directly from an AI service without acknowledgement, it is a form of academic misconduct.

### Cheating

Acting deceitfully or dishonestly to gain academic recognition or an academic result. Examples include copying answers from another person's work, taking useful information secretly into a test or exam, improperly accessing information about questions and/or answers, arranging for someone else to produce an assignment or to sit a test or exam.

## Dishonest Academic Practice

Any other act or omission that contravenes Ara academic requirements of a programme or course.

## Educative Processes

These are actions designed to assist you, as a learner, in understanding the expected standards and skills needed to succeed and may include:

- a facilitated discussion with an appropriate staff member
- a formal contract with Learning Services or other appropriate staff member for skills development including specific learning outcomes and timeframes
- additional work may be required
- a formal written warning may be given, or marks deducted.

## Penalties

These are actions designed to deter misconduct and/or deal with the consequences of it in a fair and appropriate way and may include:

- a decision not to mark or assess the work or record a mark/grade
- formally recorded fail / zero for the work concerned which remains on your academic record
- cancellation of credit already awarded if the academic misconduct is admitted/ established after assessments have been completed and recorded
- formal notice indicating 'Intentional Plagiarism' (or other misconduct) placed on academic record for a specified period of time
- formal written warning
- probation or suspension from the programme or other penalty.

## Probation

If your behaviour, as a learner, is unacceptable and of concern to staff or other learners, you will be advised of this in writing by the Dean of Faculty. This written warning is known as probation.

The written advice must briefly record the deficiencies or concerns, the progress or standards of behaviour which must be met, any assistance available, the time within which progress or change must be demonstrated, and the method and criteria by which such progress or change will be measured.

The progress or change required should be reasonable and the criteria for assessing whether the progress or change has been achieved should be easily understood and capable of being clearly demonstrated.

The written advice must include the warning that failure to make progress or achieve change may lead to suspension and/or cancellation of current enrolment(s) and/or refusal of future enrolment(s).

These requirements are known as the “terms and conditions of probation”.

For more information about probation, see [Probation](#) - scroll down and find **3.4 Probation**.

## Exclusion

An exclusion may apply to one or more specified courses, a whole programme, or all enrolment at Ara. An exclusion may also apply to one or more specified services or facilities.

## Suspension

Suspension is a short-term exclusion and is the formal process by which you, as a learner, are temporarily prohibited from attending classes in one or more courses and/or is refused access to one or more services/facilities provided by Ara. In serious circumstances a Trespass Notice may also be issued.

## Cancellation of Enrolment

Ara may cancel your enrolment as a learner on any of the Education Act (1989) grounds:

- The person is not of good character.
- The person has been guilty of misconduct or a breach of discipline.
- The person is enrolled for full-time instruction in another institution or in a school.
- The person has made insufficient progress in the person’s study or training after a reasonable trial at the institution or at another institution.

The decision to cancel or refuse an enrolment may be made only by the Operations Leader or nominee.

Failure to meet the terms and conditions of Academic Contract and/or probation may lead to exclusion.

When a cancellation is being considered, the Dean of Faculty must invite you to an interview.

## Refusal of Future Enrolment

Any person may, for good reason and on good evidence, be refused enrolment at Ara generally or in a particular programme or course only by the Operations Leader or by his or her nominee under specific delegation.

Enrolment may be refused on any of the Education Act (1989) grounds.

Failure to meet the terms and conditions of probation may lead to exclusion.

The Dean of Faculty must forward a recommendation to the Operations Leader that the person's application(s) to enrol be refused. The recommendation must state which of the Education Act (1989) grounds is the basis of the recommendation and must include the supporting evidence.

For more information about Exclusion, including Appeal Rights and Other Rights, see [Exclusion](#) - scroll down and find **3.4 Refusal of Enrolment**.

## Copyright and Ara Learners

Copyright legislation exists to protect copyright owners from unauthorised copying of their work (literary, dramatic, musical and artistic), and provides them with exclusive rights to how their work is used.

During your study with us we will endeavour to educate you on copyright use, including referencing, approved copying, and proper use of electronic material and downloadable music.

Infringement of copyright regulations may result in civil or criminal prosecution against you, as the learner, and/or Ara. Infringement by you, as a learner, may also be considered academic misconduct and result in penalties.

For more information about Copyright, see [Copyright](#).

# Kā tū whare me kā rauemi

## Facilities and resources



## Kā tū whare - Facilities

### Faculty related Health and Safety

Please refer to the [Learner Information Handbook](#) for general Health and Safety information and evacuation details. In an emergency advise a staff member, and if no one is available phone 111.

Refer to your tutors and laboratory managers for instructions and specific Health & Safety information related to laboratory and field activities.

## Kā rauemi - Resources

### Noticeboards

<b>City Campus</b>	Learner information, including employment opportunities, will be posted on the noticeboards in Paxus House and/or in clinic rooms
<b>Timaru Campus</b>	Learner information, including employment opportunities, will be posted on the noticeboards in clinic rooms

### Lockers

There are a limited amount of lockers available that are shared with other users on a daily basis. Your own padlock may need to be supplied.

Should you wish to use a locker you must supply your own lock. It is recommended you use a combination lock to remove the stress of lost or forgotten keys.

# Appendix 1

## Equipment Requirements

### NZ3444 New Zealand Certificate in Beauty Therapy (Level 4)

The uniforms and equipment for this course constitute a significant investment on your part and form the basis of the personal equipment requirements for your future career. Sound security and care of these items is essential and is your responsibility from the time of purchase. All equipment and uniforms should be named where possible.

Ara will provide each learner with a Beauty kit, uniform, name badge, textbooks and tweezers.

It is recommended each learner purchase the below supplies.

**Please speak with your tutor prior to purchasing to ensure you get the correct products.**

Equipment
<b>Beauty Kit – Is provided, but you will need to provide the following items:</b>
<b>Semester One:</b> <ul style="list-style-type: none"><li>• Brow and lash tinting colours – light brown, dark brown and blue black (black in provided kit)</li></ul>
<b>Semester Two:</b> <ul style="list-style-type: none"><li>• Make up brushes a set of 10 (compulsory)</li><li>• Make up triangles/sponges pack</li></ul>

**Disclaimer:**

All care and attention have been given to ensure the information in this document is accurate at the time of publishing. Ara does not take responsibility for any loss or harm incurred as a result of reliance upon any information which is incorrect or out of date. This document was last updated on 26 June 2026.

# Rāraki Upoko – Contents

<b>Nau mai ki Ara – Welcome to Ara</b> .....	<b>4</b>
<b>Tō Rangi Tuatahi – Orientation &amp; Your First Day</b> .....	<b>6</b>
Your First Day 2026 .....	6
Equipment requirements .....	7
Logins .....	7
Timetable information .....	7
How to find your way around .....	7
<b>Korero Nui - Important Information</b> .....	<b>9</b>
Attendance .....	9
Non-Engagement .....	10
Drugs and Alcohol .....	11
Artificial Intelligence (AI) Tools .....	11
<b>Kā Raki whakahirahira - Important Dates</b> .....	<b>12</b>
<b>Kā whakapātaka - Contact Details</b> .....	<b>13</b>
<b>Taipitopito akoraka - Programme Details</b> .....	<b>15</b>
NZ3442 – New Zealand Certificate in Skincare and Cosmetics (Introduction) (Level 3)	15
NZ3444 – New Zealand Certificate in Beauty Therapy (Level 4).....	16
NZ3445 – New Zealand Diploma in Beauty Therapy (Level 5).....	18
<b>Kā tika me kā kaweka o te tauira - Learner Responsibilities and Rights</b> .....	<b>21</b>
<b>Kā Taunakitaka Mōu – Support for You</b> .....	<b>25</b>
Quick reference – Where to find help if you have feedback or want to raise an issue .....	25
<b>Kā Aromatawai - Assessments</b> .....	<b>27</b>
Academic Integrity .....	27
The Grade Scale.....	30
<b>Kā tikaka aromatawai - Assessment Regulations</b> .....	<b>33</b>
Regulations Flowchart .....	33
Which form do I use? .....	33
Extensions.....	35
Late Submissions .....	35
Resits or resubmission of assessment tasks .....	35
Second Results (course level).....	35



Assessment in Te Reo Māori .....	35
Marks Carried Forward.....	36
Supported Assessment.....	36
Recognising Prior Knowledge and Skills .....	36
Alternative Arrangements .....	37
Aegrotat.....	37
Reconsideration of Assessment Decisions.....	37
Reconsideration of a Course Final Grade .....	37
Appeal of Reconsideration Decision .....	38
Conceded Pass .....	38
<b>Kā putaka me te Whakapōtaetaka - Results &amp; Graduation .....</b>	<b>39</b>
Accessing Your Results .....	39
Academic Transcripts.....	39
Access to Marked Assessments .....	39
Receiving Your Qualification .....	40
Graduation.....	40
<b>Kā ture me kā tikaka - Policies &amp; Procedures.....</b>	<b>41</b>
Academic Support and Progression.....	41
Formal Academic Contract       41	
Academic Misconduct.....	42
Plagiarism .....	42
Use of Artificial Intelligence (AI) Tools .....	42
Cheating .....	42
Dishonest Academic Practice.....	43
Educative Processes.....	43
Penalties.....	43
Probation .....	43
Exclusion .....	44
Suspension .....	44
Cancellation of Enrolment.....	44
Refusal of Future Enrolment.....	45
Copyright and Ara Learners .....	45
<b>Kā tū whare - Facilities .....</b>	<b>47</b>
Faculty related Health and Safety.....	47

**Kā rauemi - Resources .....47**  
**Appendix 1 .....48**  
Equipment Requirements .....48



# Nau mai ki Ara – Welcome to Ara

Kia ora

## **Welcome to the Faculty of Culture and Services.**

We have a long tradition of providing quality training by inspirational mentors. Our goal is to advantage you with courses that matter alongside tutors that are here to help and guide you. They are committed to your success so when you graduate, you're confident, work ready and equipped to succeed.

We work closely with our professional industry colleagues ensuring our programmes are exemplars of contemporary best practice.

Our training, along with your smile, your special attention to detail and awareness of guests and clients' needs, make your time spent here truly worthwhile. You'll be applying what you're learning to real tasks and projects in environments that mimic real workplaces preparing you for a career both nationally and internationally.

As a learner, you have access to a range of Ara facilities and services that are aimed at supporting your achievement. I encourage you to make the most of the all the opportunities offered. I am confident that your commitment to your education will result in a successful and fulfilling career.

I wish you all the best with your studies this year.

**Peter Sawyer**

**Dean - Faculty of Culture and Services  
2026**



# Kia rite ki te ako Getting ready for study



# Tō Rangi Tuatahi – Orientation & Your First Day

Are you ready for your first day of class? Check out your start date and where you need to be.

You can also find useful information on [MyAra](#). To access MyAra (from 21 days prior to your course beginning), you must have a current Ara network login and password. You can use [Ara Self-Service Password Reset](#) to activate your network account.)

## Your First Day 2026

### **NZ Certificate in Skin Care and Cosmetics - Christchurch**

**Date:** Monday 20 July 2026, 9.00am  
**Venue:** S Block, Room S656, Madras Street Campus  
**Wear:** Tidy dress

### **NZ Certificate in Beauty Therapy – Level 4 - Timaru**

**Date:** Monday 23 February 2026, 9.00am  
**Venue:** Room TF101, 32 Arthur Street, Timaru Campus  
**Wear:** Tidy dress

### **NZ Certificate in Beauty Therapy – Level 4 – Christchurch**

**Date:** Monday 20 July 2026, 9.00am  
**Venue:** Paxus House, 144 High Street  
**Wear:** Tidy dress

### **NZ Certificate in Beauty Therapy – Level 5 - Christchurch**

**Date:** Monday 23 February 2026, 9.00am  
**Venue:** Paxus House, 144 High Street  
**Wear:** Your Ara tunic and black dress pants with black closed toe shoes.  
Hair and makeup to be professional.

On your first day (orientation), you will be introduced to your tutors and new classmates, be given an overview of this programme, including:

- Welcome
- Programme overview and tour of Ara

- Course details
- Campus familiarisation
- Policies and procedures
- ICT access
- Programme handbook and timetable
- Cross Credit/Credit Transfer Advice

### **Returning students**

Please check your [timetable](#) for your first class details.

## **What you will need**

**Bring note taking items** – pens and highlighters.

## **Equipment requirements**

[For uniform and equipment requirements see Appendix 1.](#)

## **Logins**

If you need assistance with logins etc, contact ICT [ictservicesdesk@ara.ac.nz](mailto:ictservicesdesk@ara.ac.nz) or call 03 940 8800.

## **Timetable information**

All timetables are available on [MyAra](#).

## **How to find your way around**

Campus maps can be found [here](#).

## **Parking and bus information**

Campuses (excluding Manawa) have parking available. Payment and parking stickers may be required. Learn more about parking and biking. Or find out about bus services [here](#).

## **Ara Whakatau, your official welcome**

You are warmly invited to attend the official welcome to Ara for all learners, staff and whānau (family). The whakatau is a welcoming ceremony, similar to a

pōwhiri, involving mihi (speeches), waiata (song) and will conclude with kai timotimo (light refreshments).

Click [here](#) to find out when the whakatau will be.

## **International learners**

You will be invited to an international orientation as well as the programme orientation. You should attend both.

# Korero Nui - Important Information

## Programme Information Handbook

This handbook is heavy on detail and sometimes quite formal. There will be things you want to know and other things you will only refer to when something comes up.

Here are some quick highlights of what is in the following pages:

- The detail and the rules about the qualification you have enrolled in
- Ara expectations about how you will behave and what your rights are
- How Ara checks that you are a genuine student (like your attendance)
- A quick access guide to getting support
- How assessments work and the grades that are used
- The assessment regulations that could support you to pass and what forms to use (extensions, resits and more)
- Getting your results and going to graduation
- Key academic policies
- Health and safety information related to your study
- any after hours access arrangements

**Ask your tutor or Operations Administrator if you need help to find the information you are looking for.**

## Learner Information Handbook

We recommend that you read your Programme handbook in conjunction with the [Learner Information Handbook](#) (also available on MyAra) which has more detailed information about support and services available to learners at Ara.

## Attendance

Experience has shown that if you attend regularly and participate in the class activities and assessments you are more likely to succeed. Full attendance and commitment are encouraged. You are expected to be punctual and must comply with the various behaviour and safety requirements of classrooms, workshops and labs.

For an International learner satisfactory progress is defined as 100% attendance and successful completion of 75% or more of your courses.

**Let Ara know when you are absent from classes or if you are sick.**

**Contact your tutor or advise the faculty by emailing  
[HospitalityServices@ara.ac.nz](mailto:HospitalityServices@ara.ac.nz)**

## **Non-Engagement**

Ara has processes to deal with learners who formally enrol here but do not “engage” with their studies. That is, if you do not attend and/or participate and/or submit assignments and/or sit assessments or only attend briefly or spasmodically and/or do not engage significantly.

**Our Faculty process follows these steps if you are a no-show at the start of teaching:**

- 1** We will attempt to contact you 3 times and if we are not successful we will withdraw you (1) within 3 days if there is a waitlist of other learners who want to enrol, or (2) within 10% of the length of your enrolment (often 1 – 2 weeks)

---

- 2** You will receive an email, text or phone call asking why you have not been attending

---

- 3** There will be no academic or financial penalty from Ara but you could be overpaid by StudyLink

**Our Faculty process follows these steps for disengaged learners:**

- 1** The registers are checked and if your engagement and attendance is a concern, we will talk with you

---

- 2** You will receive an email or phone call asking why you have not been attending. You may receive a non-engagement letter

---

- 3** We will attempt to contact you three times

---

- 4** You may be placed on a Formal Academic Contract or withdrawn

---

- 5** You will receive a WD grade (after 10% of the duration of the course) or a DNC grade (after 80% of the duration of the course)

**If you are struggling with attendance, we fully encourage you to talk this over as soon as possible with your tutor.**

## **Drugs and Alcohol**

In line with the expectations of many workplaces, Ara has procedures to ensure the health and safety of all learners, staff and visitors, while undertaking Ara activities.

Many learning activities involve high-risk situations where clear thinking, decision-making, and machinery operation need to be conducted safely. These activities cannot be compromised.

You can download the policy from [CPP506 Drugs & Alcohol Policy](#)

## **Artificial Intelligence (AI) Tools**

When submitting work for assessment, you must adhere to Ara's Assessment and Academic Misconduct policies and not present AI such as ChatGPT as your own work. Learning Services have resources to help you learn to paraphrase or reference another person's work to avoid academic misconduct.

For more detail please read the [Kā ture me kā tikaka - Policies & Procedures](#) section of this handbook.

## Kā Raki whakahirahira - Important Dates

### SEMESTER ONE

### DATES

#### TERM 1

**23 February – 3 April**

Whakatau

Wednesday 4 March

Good Friday

Friday 3 April

Easter Monday

Monday 6 April

Easter Tuesday

Tuesday 7 April

#### TERM 2

**20 April – 3 July**

Anzac Day

Monday 27 April (Observed)

King's Birthday

Monday 1 June

Matariki

Friday 10 July

#### MID YEAR BREAK

**6 July – 17 July**

### SEMESTER TWO

### DATES

#### TERM 3

**20 July – 25 September**

South Canterbury Anniversary

Monday 28 September

#### TERM 4

**12 October – 27 November**

Labour Day

Monday 26 October

Canterbury Anniversary

Friday 13 November

## Kā whakapātaka - Contact Details

### Key Staff

**Ryan Marshall**

Portfolio Manager

(03) 940 8557

Room: U305

[Ryan.Marshall@ara.ac.nz](mailto:Ryan.Marshall@ara.ac.nz)



---

**Gretchen McKinley**

Operations Administrator

Room: U301A (Christchurch)

[Gretchen.McKinley@ara.ac.nz](mailto:Gretchen.McKinley@ara.ac.nz)

---

**Katherine Harris**

Operations Administrator

(03) 687 1807

Room: Student Central (Timaru)

[Katherine.Harris@ara.ac.nz](mailto:Katherine.Harris@ara.ac.nz)

---

**Student Advisors (Domestic/International)**

Student Central

X Block – Madras Street Campus

TA Block – Timaru Campus

[Learnersupport@ara.ac.nz](mailto:Learnersupport@ara.ac.nz)

---

## Teaching Staff

Name/Teaching area	Office	Email
<b>Bridgette Barwood</b> Timaru	TC206	<a href="mailto:Bridgette.Barwood@ara.ac.nz">Bridgette.Barwood@ara.ac.nz</a>
<b>Cheryl Butson</b> Christchurch	PX213	<a href="mailto:Cheryl.Butson@ara.ac.nz">Cheryl.Butson@ara.ac.nz</a>
<b>Heleen Craig</b> Timaru	TC206	<a href="mailto:Heleen.Craig@ara.ac.nz">Heleen.Craig@ara.ac.nz</a>
<b>Tracy Hutton</b> Christchurch	PX213	<a href="mailto:Tracy.Hutton@ara.ac.nz">Tracy.Hutton@ara.ac.nz</a>
<b>Tess Kerr</b> Christchurch	PX213	<a href="mailto:Tess.Kerr@ara.ac.nz">Tess.Kerr@ara.ac.nz</a>
<b>Annica Myburgh-Joubert</b> Timaru	TC206	<a href="mailto:Annica.Myburgh-Joubert@ara.ac.nz">Annica.Myburgh-Joubert@ara.ac.nz</a>
<b>Khrissy Paynter</b> Christchurch	PX213	<a href="mailto:Khrissy.Paynter@ara.ac.nz">Khrissy.Paynter@ara.ac.nz</a>
<b>Rachelle Sowman</b> Christchurch	PX213	<a href="mailto:Rachelle.Sowman@ara.ac.nz">Rachelle.Sowman@ara.ac.nz</a>
<b>Jamie Te Koeti</b> Christchurch	PX213	<a href="mailto:Jamie.Flynn@ara.ac.nz">Jamie.Flynn@ara.ac.nz</a>
<b>Jillian Ward</b> Christchurch	PX213	<a href="mailto:Jillian.Ward@ara.ac.nz">Jillian.Ward@ara.ac.nz</a>
<b>Tori Wright</b> Christchurch	PX213	<a href="mailto:Tori.F.Wright@ara.ac.nz">Tori.F.Wright@ara.ac.nz</a>

### Beauty Clinic, 144 High Street, Christchurch

Email: [treatments@ara.ac.nz](mailto:treatments@ara.ac.nz)

### Beauty Clinic, 32 Arthur St, Timaru

Phone Number: (03) 687 1863

Email: [Heleen.Craig@ara.ac.nz](mailto:Heleen.Craig@ara.ac.nz)

# Taipitopito akoraka - Programme Details

## NZ3442 – New Zealand Certificate in Skin Care and Cosmetics (Introduction) (Level 3)

### Programme Aim

This qualification is designed to provide the beauty sector with skin care and makeup technicians who have the foundation skills and knowledge to provide a range of makeup and skin care services. It is intended for school leavers or lifelong learners who wish to gain an entry level beauty therapy qualification and or pathway to further study.

### Graduate Profile

Graduates will be able to:

Comply with all professional standards and expectations relating to a makeup and skin care workplace including associated health, safety and hygiene obligations.

Consult with clients to establish their needs, and decide on and agree a range of possible makeup and/or skin care services and products, and an appropriate course of treatment.

Advise clients on the selection and use of appropriate cosmetics and toiletries and assist with sales and promotional activities within a makeup and skin care workplace.

Apply skills and knowledge of makeup and skin care services to meet client's needs in accordance with industry standards.

Identify symptoms of skin conditions in order to advise clients of their possible implications in terms of proposed skin care and makeup services.

Communicate professionally in a makeup and skin care workplace.

### Programme Regulations

The New Zealand Certificate in Makeup and Skin Care (Introduction) (Level 3) is a 19-week full time equivalent programme of study requiring the successful completion of 60 course credits.

The programme comprises 60 compulsory course credits at Level 3.

Minimum completion time: None specified (allowing for Recognition of Prior Learning, Cross Credit and Credit Transfer).

Maximum completion time: 2 years. Any extension to this period would require a written application from the Dean of Faculty or delegate.

## Programme Matrix

Use the following table as a guide to the courses in your programme. You can find out how many credits each course is worth, and how many credits and courses you need to do to complete your study.

Code	Course Title	Level	Credits	Course Factor
<b>Compulsory</b>				
CMSC301	Skin Care	3	30	0.2500
CMSC302	Professional Image and Conduct	3	15	0.1250
CMSC303	Makeup in the Clinic	3	15	0.1250
<b>Total</b>			<b>60</b>	<b>0.5000</b>

## NZ3444 – New Zealand Certificate in Beauty Therapy (Level 4)

### Programme Aim

This programme is designed to provide the beauty therapy industry with skilled therapists who have the knowledge and ability to competently perform a range of beauty treatments. It is intended for learners who have little or no prior learning or experience in beauty services.

### Graduate Profile

Graduates will be able to:

- Implement professional standards and expectations relating to the beauty workplace including all relevant health, safety and hygiene obligations.
- Undertake a full consultation with clients, build client rapport, and perform an in-depth need analysis for beauty services and product needs to develop a beauty treatment plan.
- Apply knowledge of natural nail services, products, and tools, and related skills, to meet client's needs in accordance with industry standards and current and emerging trends.

- Apply knowledge of facial and skin care services, and related skills, to meet client's needs, during and after treatment, in accordance with industry standards and current and emerging trends.
- Apply knowledge of manual hair removal and body care services, and related skills, to meet client's needs, during and after treatment, in accordance with industry standards and current and emerging trends.
- Apply knowledge of relevant aspects of chemistry, physics and biology in a beauty services context to provide effective services and ensure client comfort and safety.
- Provide nutritional advice specific to the skin which is complementary for healthy skin, hair and nails.
- Apply knowledge of skin and skin-related disease and disorders to identify symptoms and advise clients of possible implications in terms of proposed beauty services.
- Provide reception and client sales services and carry out associated transactions and administration.
- Contribute to the operation of a small beauty sector business or client base.

### **Education pathway**

- This qualification may build on the New Zealand Certificate in Makeup and Skin Care (Introduction) (Level 3), and may lead to the:
- New Zealand Diploma in Beauty Therapy (Level 5) [Ref: 3445]

### **Employment pathway**

Graduates of this qualification may be employed in positions such as:

- Beauty therapist
- Cosmetic product company representative

## **Programme Regulations**

The New Zealand Certificate in Beauty Therapy (Level 4) is a one-year full time equivalent programme of study requiring the successful completion of 120 compulsory course credits.

Minimum completion time: None specified (allowing for Recognition of Prior Learning, Cross Credit and Credit Transfer)

Maximum completion time: Three years. Any extension to this period would require a written application from the Dean of Faculty or delegate.

## Programme Matrix

Use the following table as a guide to the courses in your programme. You can find out how many credits each course is worth, and how many credits and courses you need to do to complete your study.

Code	Course Title	WIL*	Level	Credits	Course Factor
<b>Compulsory</b>					
CBTP301	Professional Practice	0	3	15	0.1250
CBTM401	Makeup Services	10	4	15	0.1250
CBTF402	Facial Treatments	10	4	15	0.1250
CBTN403	Nail Services	10	4	10	0.0834
CBTW404	Waxing Services	10	4	15	0.1250
CBTC405	Cosmetic Enhancements	10	4	10	0.0833
CBTB406	Beauty Therapy Clinic	10	4	10	0.0833
CBTA407	Anatomy and Physiology	0	4	15	0.1250
CBTR408	Relaxation Massage	10	4	15	0.1250
<b>Total</b>		<b>70</b>		<b>120</b>	<b>1.0000</b>

\*Work integrated learning

## NZ3445 – New Zealand Diploma in Beauty Therapy (Level 5)

### Programme Aim

This programme is designed to provide the beauty sector with therapists who have the skills and knowledge to critically analyse clients' needs and provide advanced beauty services. This programme is intended for learners who have prior learning or experience as a beauty therapist to equip them with the skills and knowledge to successfully provide advanced beauty services and manage the operations of a client based or small beauty therapy business.

## Graduate Profile

Graduates will be able to:

- Implement professional standards and expectations relating to advanced beauty services including all relevant health, safety and hygiene obligations.
- Undertake an in-depth consultation and build rapport with clients to analyse and evaluate their needs and develop and manage a treatment plan for advanced beauty services.
- Apply knowledge of advanced skin care services and products, and related skills, to meet client's needs, during and after treatment, in accordance with industry standards and current and emerging trends.
- Apply knowledge of advanced body therapy services and products, and related skills, to meet client's needs, during and after treatment, in accordance with industry standards and current and emerging trends.
- Apply knowledge of advanced hair removal services and products, and related skills, to meet client's needs, during and after treatment, in accordance with industry standards and current and emerging trends.
- Apply knowledge of relevant aspects of chemistry, physics and biology in an advanced beauty services context to provide effective services and ensure client comfort and safety.
- Manage the operation of a small beauty sector business or client base.
- Apply knowledge of skin and body diseases and disorders in order to identify symptoms, provide information and advice, and refer clients to health practitioners in accordance with industry standards relating to scope of practice.
- Provide nutritional advice which is complementary to advanced beauty services.

## Programme Regulations

The New Zealand Diploma in Beauty Therapy (Level 5) is a one-year full time equivalent programme of study requiring the successful completion of 120 compulsory course credits.

Minimum completion time: None specified (allowing for Recognition of Prior Learning, Cross Credit and Credit Transfer).

Maximum completion time: Three years. Any extension to this period would require a written application from the Dean of Faculty or delegate.

## Programme Matrix

Use the following table as a guide to the courses in your programme. You can find out how many credits each course is worth, and how many credits and courses you need to do to complete your study.

Code	Course Title	WIL*	Level	Credits	Course Factor
<b>Compulsory</b>					
DBTP511	Professional Business Standards	10	5	15	0.1250
DBTB512	Advanced Beauty Services 1	10	5	15	0.1250
DBTB522	Advanced Beauty Services 2	10	5	15	0.1250
DBTS523	Advanced Body Therapies	10	5	15	0.1250
DBTE514	Electrology 1	0	5	15	0.1250
DBTE524	Electrology 2	10	5	15	0.1250
DBTA525	Anatomy and Physiology with Nutrition	0	5	20	0.1667
DBTC526	Beauty Sector Clinic	20	5	10	0.0833
<b>Total</b>		<b>70</b>		<b>120</b>	<b>1.0000</b>

\*Work integrated learning

# Kā tika me kā kaweka o te tauira - Learner Responsibilities and Rights

## Learner Responsibilities and Rights

The Ara community consists of a diverse range of people and cultures, and we respect all members of our community. Our aim is to have a community where learners respect themselves and others, a community where healthy social interactions and academic pursuits are expected. To create and maintain the best possible teaching and learning environment, you are protected by basic rights and are expected to respect the rights and responsibilities of others.

### Useful Contacts:

Independent Student Advocate: Duncan Dunbar

Email: [duncan.dunbar@ara.ac.nz](mailto:duncan.dunbar@ara.ac.nz)

Student Voice Coordinator:

Email: [studentvoice@ara.ac.nz](mailto:studentvoice@ara.ac.nz)

## Your Responsibilities as a Learner

As a learner here, Ara expects you to:

### Behave safely

- Take care when using equipment and facilities.
- Wear suitable clothing.
- Follow health and safety guidelines and instructions.
- Not endanger yourself or others.
- Follow relevant professional guidelines.
- Ensure you are not intoxicated or under the influence of drugs on Ara premises or when involved in Ara related activities both formal and informal, with your programme, field trips, internships etc.

### Respect others

- Be sensitive to personal, social, and cultural differences.
- Respect the needs, rights, and freedoms of others.
- Help to uphold the integrity of Ara qualifications by discouraging/reporting dishonest practices.

### **Observe Ara rules**

- Behave appropriately for a tertiary education environment.
- Genuinely attempt to meet all course requirements including financial obligations.
- Comply with visa requirements.
- Be honest when completing assignments/other assessments.
- Comply with requirements of programme handbooks.
- Follow Ara policies and regulations (refer: [Ara Policy Library](#)).

## **Your Rights as a Learner**

Ara will protect your right to fairness. You have a right to:

### **Fairness**

- Open and accurate information.
- Fair evaluation and assessment.
- Have any problems handled as quickly as is practical and consistent with 'natural justice'.
- Personal privacy.
- Support, representation, and advocacy.

### **Ara Respects your right to:**

- Academic freedom, defined as 'freedom, within the law, to question and test received wisdom, to put forward new ideas and to state controversial or unpopular opinions.' (Education and Training Act 2020)
- Freedom from any form of harassment, bullying, or unjust discrimination.
- Respect for personal, social, and cultural differences.
- Representation in the development, implementation, and review of policies.

### **Ara will protect your right to Standards:**

- Study programmes that meet internal and external standards for approval and registration.
- To have competent and effective teachers.
- Appropriate support services delivered in a professional manner.
- Facilities and resources that meet or exceed Health & Safety legislation.

### **Concerns / Complaints:**

Your rights will be upheld by Ara management. If you think they have been infringed, in the first instance please contact your course tutor. If it is not appropriate to contact your tutor regarding your complaint, or the matter has not been resolved, please contact your Portfolio Manager or Student Advocate and/or the Student Life Team.

## Unacceptable Behaviour for Learners, or Visitors at Ara

The following are examples of behaviour which are not acceptable for anyone (learners, or visitors), at Ara or involved in Ara related activities:

- Breaking any NZ law (e.g., assault, theft).
- Any form of cheating (including plagiarism and other dishonest practices).
- Misuse of technology, software, hardware, or communication systems provided by Ara (refer Ara Code of Conduct for ICT Users in particular).
- Any form of harassment, bullying, or unjust discrimination including social media.
- Unacceptable sexual behaviour (e.g., sexual harassment, accessing pornography/other restricted material).
- Misuse of alcohol, drugs or other substances affecting behaviour, health, or safety.
- Smoking (including vaping) on Ara campuses. (Ara is a smoke free campus).
- Violence or threats of violence.
- Vandalism or other abuse of facilities and buildings.
- Disruptive behaviour in class (e.g., arriving late, use of any electronic device, interfering with the learning of other individuals).
- Inductions (informal) are not permitted at Ōtautahi House or on other Ara premises and are strongly and expressly discouraged by Ara.
- The above is not an exhaustive list of unacceptable behaviours. Where appropriate, Ara reserves the right to contact or report to external authorities.

Academic staff have the responsibility to maintain a safe and effective learning environment.

They may ask you to leave the class if your behaviour indicates limited ability to be safe, disturbance to others learning, or puts others at risk.

Ara takes this code of conduct seriously. Your marks, reports, and references may include an assessment of your behaviour, as well as your educational achievement. Serious infringement may lead to probation, suspension, or cancellation of a current enrolment and/or refusal of a future enrolment (see relevant policies). This may be referred to an appropriate external authority e.g., NZ Police

## **Learner Behaviour in class / classroom maintenance**

Be respectful of other learners and the classroom environment, following classroom specific rules and requirements. To avoid any distractions, you must ensure any electronic device you have on you/with you is diverted, not set to ring, or switched off. Both staff and students have a responsibility to ensure this happens

## **Dress Code**

At Ara there is no written dress code, but you are expected to attend classes dressed in a way which is generally acceptable. However, you're expected to be "dressed for the occasion" when going on a site visit or undertaking a Cooperative Education Project. You may be prevented from going on site visits if the staff member is of the opinion that you're not dressed for the occasion.

In this programme, a "dress code" and standard is required, as follows:

- Black flat shoes
- Black socks
- Black dress trousers
- Uniform top

## Kā Taunakitaka Mōu – Support for You

### Quick reference – Where to find help if you have feedback or want to raise an issue

The Education (Pastoral Care of Tertiary and International Learners) Code of Practice sets out the expectations that tertiary education organisations need to consider how their overall systems and resources support learners' wellbeing and safety.

For more detailed information on the code, and support areas listed below, please refer to the [Learner Information Handbook](#) on MyAra.

Support Area	Details	People	Links
<b>Faculty Staff</b>	This team are your first port of call for issues impacting your ability to study	Tutors Portfolio Manager	<a href="#">Contacts</a>
<b>Student Reps</b>	Student reps are invited to attend student rep meetings within your faculty where they can raise issues on your behalf	Student Voice Posters of your student reps are displayed in your faculty	<a href="#">Student Voice</a>
<b>Student Services</b>	Ara offers a wide range of student services	Student Advisors Health Centre Student Voice	<a href="#">Student Support</a>
<b>Te Pae Ora</b>	A wellbeing hub for ākonga		<a href="#">Te Pae Ora   Te Pūkenga</a>
<b>Independent Student Advocate</b>	Student Advocacy is available to assist you if you are facing difficulties within or beyond Ara that could affect your study	Duncan Dunbar 027 273 6246 <a href="mailto:Duncan.Dunbar@ara.ac.nz">Duncan.Dunbar@ara.ac.nz</a> X106 (Rakaia Centre)	<a href="#">Student Advocacy</a>

Support Area	Details	People	Links
<b>Complaints Process</b>	Ara has a process to support you and respond if you have a concern or complaint about a course, tutor, or another aspect of your programme	Complaints Co-ordinator	<a href="#">CPP117-Raising-problems-or-complaints</a> <a href="#">CPP117a-Raising-problems-or-complaints-form</a>
<b>SafePlace</b>	SafePlace is the tool we use to report risks, accidents and other incidents	Safety & Wellbeing Co-ordinator Safety & Wellbeing Business Partner	<a href="#">SafePlace FAQ for Learners</a>
<b>Important Policies</b>	All Ara Corporate and Academic Policies can be found at <a href="#">Ara Policy Library</a>		<a href="#">Student Rights and Responsibilities</a> <a href="#">Addressing Bullying, Harassment and Discrimination</a>

# Kā Aromatawai - Assessments

## Assessment Information

At the start of each course, you will be given a **Course Outline**. Before each assessment you will be given an **assessment brief**. They will show:

The number, type, and due dates for all assessments, including tests and assignments, and will give you details on:

- The weighting of each assessment in your course that contributes to your final grade, if applicable.
- The assessment policy for resits, second results and alternative assessments, if they are different from the policies in this document.
- The time frame for getting your marked assessments back from tutors, if they are different from those stated in this document.
- The penalties for handing assessments in late, if they are different from those stated in this document. These may be different for each course.

If you do not receive this information, talk to the course tutor or Academic Manager.

## Assessment Types

**Formative assessment** Verbal and written feedback that takes place throughout classes and the programme.

---

**Summative assessment** Assessments throughout the year that are based on learning outcomes for the course and determine how well you have achieved each outcome. You are given grades and written feedback. These assessments may include practical tests and projects.

The contents of the course work will be explained by the tutor for each course. If at any point your tutor or Academic Manager is concerned about your progress, they will let you know.

## Academic Integrity

Ara requires learners to be honest and act with integrity in their learning and assessments.

You are required to:

- present your own original work for assessment
- acknowledge contributions from other sources by using the referencing format required for the programme (failure to do this correctly may be regarded as plagiarism); this includes direct copying, paraphrasing, summarising, and the rearranging of, another person's words or idea/s
- not cheat in tests or examinations
- ensure you follow all instructions and the correct procedures (e.g., no use of mobile phones or personal electronic devices)
- not enter into any agreements with other learners to collude on assignments
- collaborate only as permitted
- not over- or misrepresent the individual contributions of members of any group assignment
- not knowingly help others to cheat
- not present another person's assessment as your own (this includes purchased assessments) j
- not act or behave in a way that prevents others from completing their assessments
- keep written and electronic work secure to prevent others from accessing and copying work. (2)

Any exceptions to the above are clearly stated in the information and requirements for the course.

By enrolling at Ara, you agree to your work being reviewed by various means to confirm an assessment is your own work. This includes the use of similarity detection software.

Any breaches of academic integrity follow the process set out in the academic integrity procedures. For more detailed information, please refer to the [Academic Integrity Policy](#)

## Submitting Your Work

Your tutors will let you know if they have guidelines for presenting your assessments and how to submit your work. Use a computer to create your assessments.

You may be required to submit your work manually or electronically. If you submit your work electronically, keep a copy until your official results are published at the end of the semester. If you have any questions, contact your tutor.

**Note:** Ara uses as part of its assessment processes electronic plagiarism detection. You will, from time to time, be required to submit assessments for scanning. Electronic copies of assessments must be retained by you until the official results are published after the end of semester or year.

## Quality Assurance

Your assessments and exam scripts may be used for internal and external moderation, monitoring, programme reviews, aegrotats, and the resolution of academic appeals and complaints. This helps Ara meet internal and external academic quality assurance requirements. If your assessments are used this way, before they are used, any information that could reasonably be expected to identify you will be removed.

## The Grade Scale

The various assessments within a course will be combined according to the weightings shown in the course descriptor, and a grade for the course as a whole will be assigned from the table shown below. A "C-" grade and above represents a pass for the course.

The following grade scale (G29aa) will be used for all courses on the programmes unless advised otherwise in the course descriptor:

## Marked Grades

Grade	Mark range	Pass or fail
A+	90-100	Pass
A	85-89	Pass
A-	80-84	Pass
B+	75-79	Pass
B	70-74	Pass
B-	65-69	Pass
C+	60-64	Pass
C	55-59	Pass
C-	50-54	Pass
D	40-49	Fail
E	0-39	Fail

## Other Grades

Other grades that may be awarded for particular circumstances in achievement based courses include:

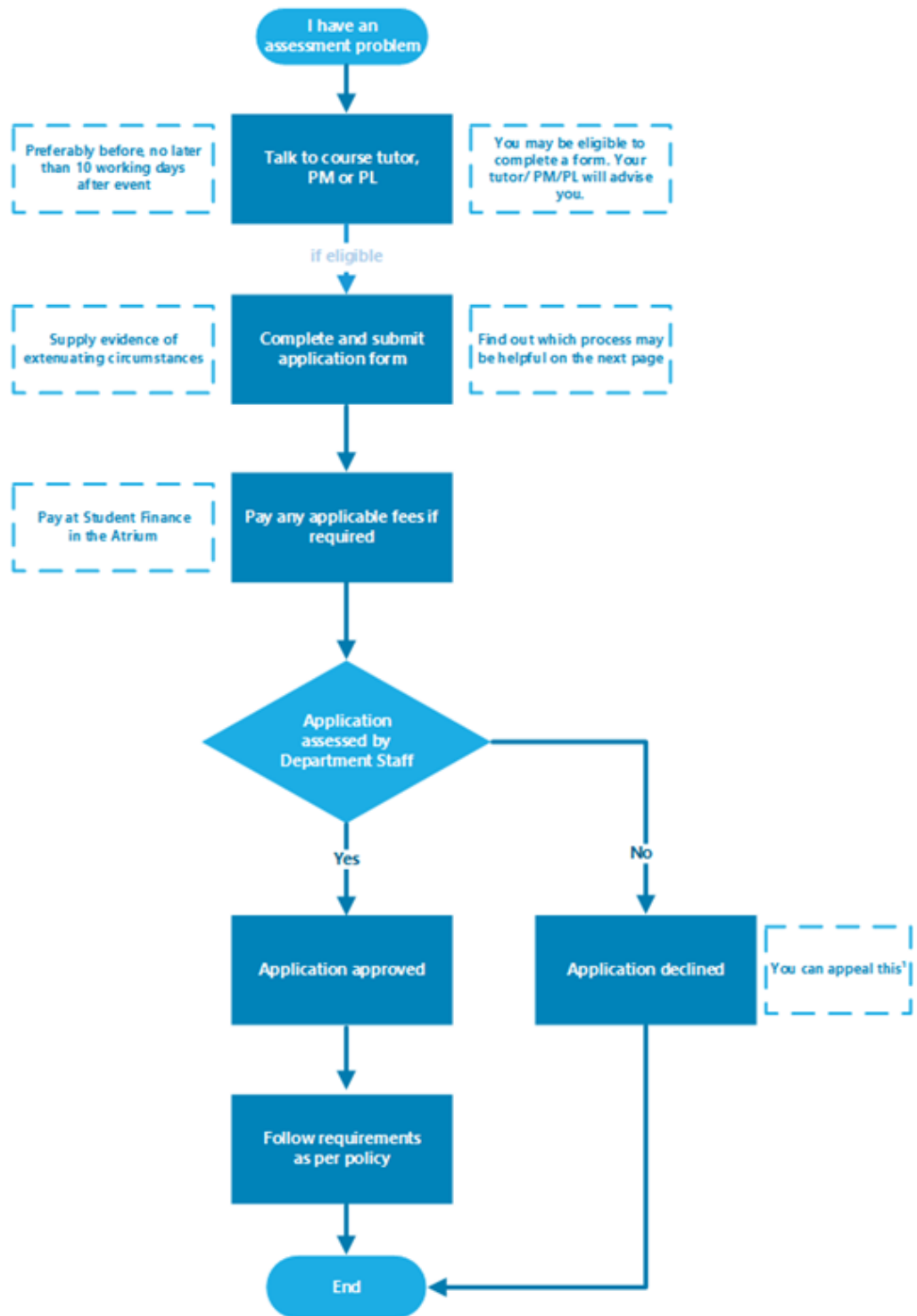
Course result	Grade	Description
Pass	Pass	Awarded pass and no appropriate grade can be awarded
Fail	Fail	Not passed and no appropriate grade can be awarded
Credit Transfer	CT	Course credit awarded by credit transfer
Cross Credit	CC	Course credit awarded by cross credit
Recognition of Prior Learning	P	Course credit awarded by Recognition of Prior Learning
Did not complete	DNC	Did not complete course requirements
Withdrawn	W	Formal withdrawal within the non-academic penalty period
Aegrotat	AEG	Awarded pass following consideration of impaired performance / aegrotat application. Where a grade is able to be determined AEG (Grade) will be recorded.
Restricted pass	RP	Where a course was narrowly failed (45-49%) and is compensated by overall good performance in the relevant subject. It cannot be used to meet pre-requisite requirements
Conceded Pass	CON	Where there is considerable evidence that marginal failure (45-49%) in one course is compensated by good overall performance. Only one conceded pass may be granted to a learner towards a particular qualification

Conditional Pass CP

Where a course was narrowly failed (45-49%) and an agreed portion of work or assessment is to be completed.

# Kā tikaka aromatawai - Assessment Regulations

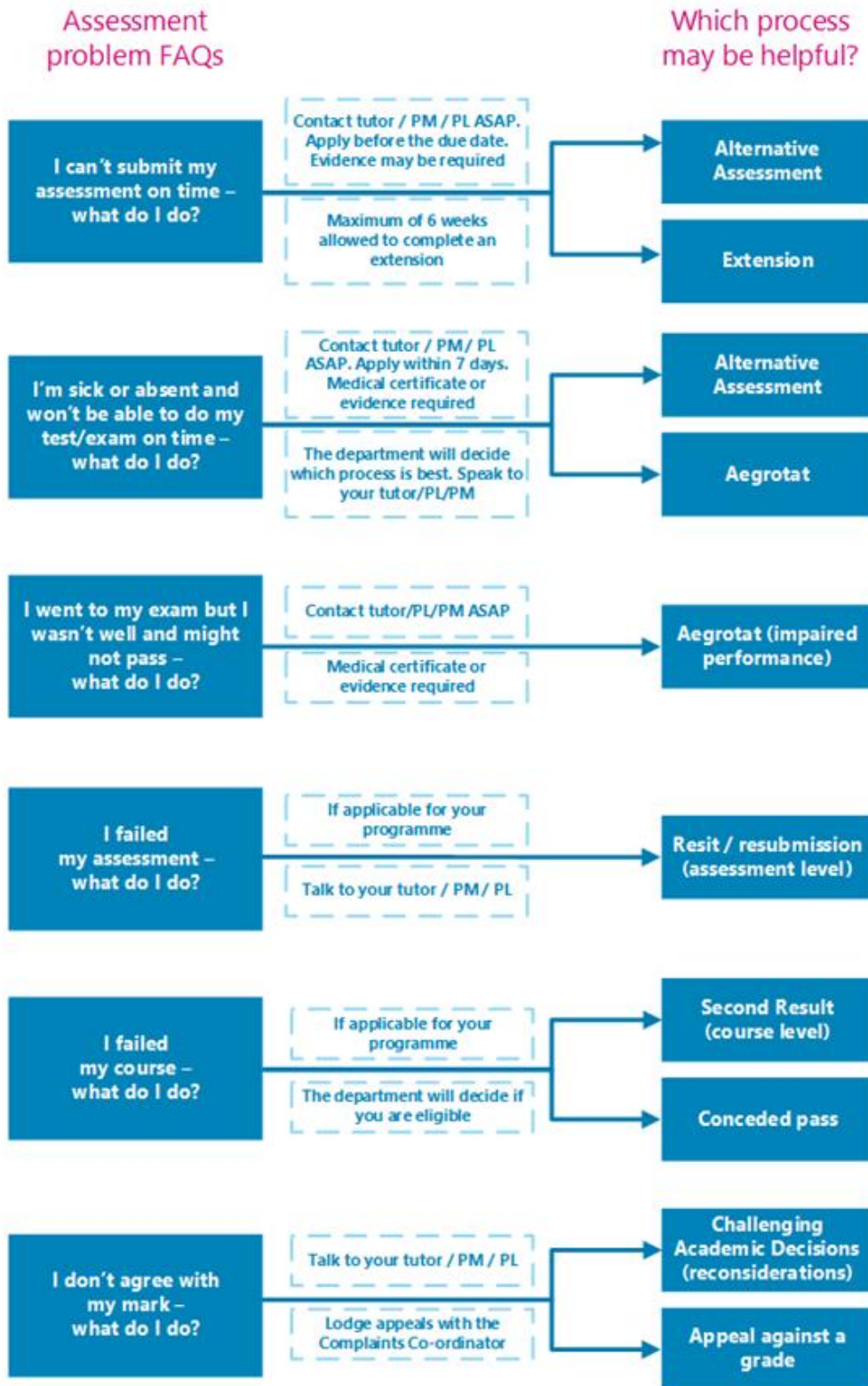
## Regulations Flowchart



\*The student lodges the appeal in writing with the Complaints Co-ordinator with a copy to the Head of Department

# Which form do I use?

*\* Always speak to your tutor, Programme Manager (PM) or Programme Leader (PL) to see if you are eligible*



## Extensions

If you anticipate difficulty in submitting assessments by the due time and date you may be able to request an extension.

For information about how to apply for an extension of time, see [Assessment Policy](#) - scroll down and find **3.14 Extensions**. You can download the form from [Application for Extension of Time](#)

## Late Submissions

Other than approved extensions, late submissions will have 10% deducted for each day (or part thereof) of lateness up to a maximum of five days after it was due. If an assessment is submitted more than five days after it was due, it will not be marked unless special circumstances are approved by the HoD.

Unless approved, we will not accept the assessment and a Not Passed (NP) or equivalent failing grade will be assigned.

## Resits or resubmission of assessment tasks

If you have submitted and failed an assessment task you may be able to apply for a resubmission resit

For information about how to apply for a resit or resubmission, see [Assessment Policy](#) - scroll down and find **3.15 Resits and Resubmissions**. You can download the form from [Application for Resit or Resubmission](#)

## Second Results (course level)

If you receive a fail grade in a course, you may be able to apply for a reassessment of the course.

For information about how to apply for a second result, see [Assessment Policy](#) - scroll down and find **3.16 Second Results**. You can download the form from [Application for Second Result](#)

## Assessment in Te Reo Māori

You can request to have your assessments conducted in Te Reo Māori, except where the task requires English language or other language capability. Other exceptions may apply.

For information about how to apply for assessment in Māori see [Assessment Policy](#) - scroll down and find **3.4 Assessment in Te Reo Māori**.

## Marks Carried Forward

You may be able to apply to carry marks forward for completed assessments to the next available occurrence of the course and not redo those assessments.

For information about how to apply for marks carried forward, see [Assessment Policy](#) - scroll down and find **3.18 Marks Carried Forward**. You can download the form from [Marks Carried Forward Application form](#).

## Supported Assessment

You may be able to apply for special assistance in order to undertake an assessment.

For more information about how to apply for additional assessment arrangements for disabled learners, see [Assessment Policy](#) - scroll down and find **3.19 Procedures for additional assessment arrangements for disabled learners**.

## Recognising Prior Knowledge and Skills

If you believe that a qualification, course or unit standard you have previously completed a recognised educational institution, or work/life experience, may be relevant to the qualification you are studying, you could apply for recognition of your prior knowledge and skills.

The previous grade is carried forward for any Cross Credit or Credit Transfer, and the Pass (P) grade given where a standard grade cannot be stated.

For information about how to apply for credit recognition, see [Credit Recognition](#). You can download the form from [Credit Recognition Application](#).

## Alternative Arrangements

If you are unable to sit a test or exam on the scheduled date, or complete an assessment on the due date, you may be able to apply for an alternative assessment

For information about how to apply for an alternative assessment see [Assessment Policy](#) - scroll down and find **3.13 Alternative Assessment Arrangements**. You can download the form from [Application for Alternative Time for Test / Exam](#)

## Aegrotat

You may be able to apply for an aegrotat when illness, injury, bereavement, childbirth, or other unforeseen critical circumstances occur on or immediately prior to the day of assessment and prevent you from attending the assessment or seriously impair your performance during the assessment itself.

For information about these regulations, see [Aegrotat Pass Regulations](#) You can download the form from [Aegrotat Application](#) and the Practitioner Statement form from [Aegrotat Practitioner Statement](#).

## Reconsideration of Assessment Decisions

If you have reason to believe that the mark for a particular assessment is incorrect you may be able to apply for a reconsideration.

For information about challenging academic decisions (reconsideration), see Challenging Academic Decisions (Reconsideration) [Assessment Policy](#) - scroll down and find **3.20 Reconsiderations and Appeals**. You can also refer to [Reconsiderations and Appeals](#)

## Reconsideration of a Course Final Grade

If you have reason to believe that the grade for a particular assessment is incorrect you may be able to apply for a reconsideration.

For information about challenging academic decisions (reconsideration), see Challenging Academic Decisions (Reconsideration) [Assessment Policy](#) - scroll down and find **3.20 Reconsiderations and Appeals**. You can also refer to [Reconsiderations and Appeals](#)

## Appeal of Reconsideration Decision

If you consider that the outcome of the reconsideration process is incorrect or unfair, or a reconsideration is not available, you may appeal against the final grade awarded.

For information about challenging academic decisions (reconsideration), see [Assessment Policy](#) - scroll down and find **3.20 Reconsiderations and Appeals**. You can also refer to [Reconsiderations and Appeals](#).

## Conceded Pass

You may qualify for a conceded pass if you marginally fail a course.

For information about conceded passes, see [Assessment Policy](#) - scroll down and find **3.17 Conceded Pass**.

# Kā putaka me te Whakapōtaetaka - Results & Graduation

## Accessing Your Results

Results of individual assessments will be made available to you within fifteen (15) working days of your assessment due date.

These results may be returned to you in class or online. Final grades for each course will be available online within fifteen (15) working days of the end date of the course and accessible through My Ara at [MyAra](#) or through the My Ara app.

Any results displayed publicly will use unique identifiers such as student ID numbers, not student names.

**Note:** Staff members are under no obligation to advise you of your final grade for a course. After you have completed all the assessments in a course, we ask that you allow the staff time to complete the marking. At the end of semester staff members are under great pressure to submit final results to Academic Records so that they can be processed and then made available to all learners as soon as possible.

## Academic Transcripts

If you require your results to be printed, visit Central Academic Records (CAR) in A121 or email [academic.records@ara.ac.nz](mailto:academic.records@ara.ac.nz) to request a transcript.

## Access to Marked Assessments

You are entitled to access your written work submitted for assessment.

Where assessed work is to be returned, time limits for collection will be advised by the faculty.

You may view copies of your examinations, but these are retained by Ara. Any time or access limitations will be advised by the faculty.

Please note that in order to meet internal and external academic quality assurance requirements, learner assessments and examination scripts may be used for the purposes of:

- internal and external moderation
- programme review
- aegrotats (if available)
- resolution of academic appeals and complaints

Assessments used for these purposes will have information, which could reasonably be expected to identify the individual removed before they are copied and used.

## Receiving Your Qualification

Once you have successfully completed your approved programme of study you will receive a notification advising you that your certificate is ready and will be posted to you.

**Note:** Please make sure your address details are up to date when you finish studying. Advise Academic Records if you are updating your address details after you receive the notification, so the correct address is used.

## Graduation

We hold several graduation ceremonies.

If you're eligible to graduate, you'll receive a communication from Ara advising you of this. You'll need to complete the online graduation form, by the date indicated, to register for your ceremony.

**Note:** If you believe you are entitled to graduate and do not hear from Ara please contact the Operations Administrator or Academic Records.

For all information on graduation, including dates, please see [Graduation](#)

# Kā ture me kā tikaka - Policies & Procedures

## Academic Policies

All policies are accessible on the Ara website All policies are accessible on the Ara website [Ara Policy Library](#). Ara provides a student advocacy service.

It is well known that people learn better when they work together, and this is encouraged, but when it comes to assessment, collaboration (working together) is not permitted unless it is a formal part of the assignment set by the tutor(s). Each learner is also responsible for making sure his/her work is not able to be copied by others. Sharing or comparing tests, exams and assessments is prohibited and, if detected, will be treated as “academic misconduct”.

## Academic Support and Progression

Support is available if you, as a learner, are having difficulty meeting academic standards or you seek guidance, assistance or support with study related matters.

If you are not achieving satisfactorily, you will receive specifically targeted advice and assistance at an early stage.

Academic staff members will work with you if you are not meeting academic standards to document and implement a plan. This will include identifying and monitoring goals, expected academic progress, timelines and support.

If satisfactory progress is not made then you will be invited to meet with the Dean of Faculty or their delegate, who will explain the circumstances, discuss the consequences, and give you the opportunity to present your view of events leading up to the meeting. Depending on the outcome of the meeting, a Formal Academic Contract may be entered into.

## Formal Academic Contract

If your progress as a learner in a current course is still considered by tutors to not be satisfactory you will be invited to a meeting and advised in writing by the Dean of Faculty or delegate.

The Formal Academic Contract will record the deficiencies or concerns, the progress which must be met, any assistance available, the time within which progress or change must be demonstrated, and the method and criteria by which such progress or change will be measured.

For more information about Academic Support and Progression, see [Academic Support and Progression](#) - scroll down and find **3.3 Formal Academic Contract**.

## Academic Misconduct

Cheating, plagiarism and other dishonest academic practices have serious consequences in this programme and if you fail to meet academic standards you, as a learner, may be subject to educative processes or penalties.

### Plagiarism

Copying, taking or using someone else's work or ideas and presenting them as if they were your own original work or thought, without clear acknowledgement of the actual source.

### Use of Artificial Intelligence (AI) Tools

Generative Artificial Intelligence (AI) services such as ChatGPT can be used for learning. When submitting work for assessment, you must adhere to Ara's Assessment and Academic Misconduct policies. In relation to AI, this means;

- you must not present any output from any AI services as your own work in your assessment.
- you must use your own words.
- if you paraphrase or quote from a source such as a textbook, website and AI service, you must reference correctly.

If you submit an assessment using content copied directly from an AI service without acknowledgement, it is a form of academic misconduct.

### Cheating

Acting deceitfully or dishonestly to gain academic recognition or an academic result. Examples include copying answers from another person's work, taking useful information secretly into a test or exam, improperly accessing information about questions and/or answers, arranging for someone else to produce an assignment or to sit a test or exam.

## Dishonest Academic Practice

Any other act or omission that contravenes Ara academic requirements of a programme or course.

## Educative Processes

These are actions designed to assist you, as a learner, in understanding the expected standards and skills needed to succeed and may include:

- a facilitated discussion with an appropriate staff member
- a formal contract with Learning Services or other appropriate staff member for skills development including specific learning outcomes and timeframes
- additional work may be required
- a formal written warning may be given, or marks deducted.

## Penalties

These are actions designed to deter misconduct and/or deal with the consequences of it in a fair and appropriate way and may include:

- a decision not to mark or assess the work or record a mark/grade
- formally recorded fail / zero for the work concerned which remains on your academic record
- cancellation of credit already awarded if the academic misconduct is admitted/ established after assessments have been completed and recorded
- formal notice indicating 'Intentional Plagiarism' (or other misconduct) placed on academic record for a specified period of time
- formal written warning
- probation or suspension from the programme or other penalty.

## Probation

If your behaviour, as a learner, is unacceptable and of concern to staff or other learners, you will be advised of this in writing by the Dean of Faculty. This written warning is known as probation.

The written advice must briefly record the deficiencies or concerns, the progress or standards of behaviour which must be met, any assistance available, the time within which progress or change must be demonstrated, and the method and criteria by which such progress or change will be measured.

The progress or change required should be reasonable and the criteria for assessing whether the progress or change has been achieved should be easily understood and capable of being clearly demonstrated.

The written advice must include the warning that failure to make progress or achieve change may lead to suspension and/or cancellation of current enrolment(s) and/or refusal of future enrolment(s).

These requirements are known as the “terms and conditions of probation”.

For more information about probation, see [Probation](#) - scroll down and find **3.4 Probation**.

## Exclusion

An exclusion may apply to one or more specified courses, a whole programme, or all enrolment at Ara. An exclusion may also apply to one or more specified services or facilities.

## Suspension

Suspension is a short-term exclusion and is the formal process by which you, as a learner, are temporarily prohibited from attending classes in one or more courses and/or is refused access to one or more services/facilities provided by Ara. In serious circumstances a Trespass Notice may also be issued.

## Cancellation of Enrolment

Ara may cancel your enrolment as a learner on any of the Education Act (1989) grounds:

- The person is not of good character.
- The person has been guilty of misconduct or a breach of discipline.
- The person is enrolled for full-time instruction in another institution or in a school.
- The person has made insufficient progress in the person’s study or training after a reasonable trial at the institution or at another institution.

The decision to cancel or refuse an enrolment may be made only by the Operations Leader or nominee.

Failure to meet the terms and conditions of Academic Contract and/or probation may lead to exclusion.

When a cancellation is being considered, the Dean of Faculty must invite you to an interview.

## Refusal of Future Enrolment

Any person may, for good reason and on good evidence, be refused enrolment at Ara generally or in a particular programme or course only by the Operations Leader or by his or her nominee under specific delegation.

Enrolment may be refused on any of the Education Act (1989) grounds.

Failure to meet the terms and conditions of probation may lead to exclusion.

The Dean of Faculty must forward a recommendation to the Operations Leader that the person's application(s) to enrol be refused. The recommendation must state which of the Education Act (1989) grounds is the basis of the recommendation and must include the supporting evidence.

For more information about Exclusion, including Appeal Rights and Other Rights, see [Exclusion](#) - scroll down and find **3.4 Refusal of Enrolment**.

## Copyright and Ara Learners

Copyright legislation exists to protect copyright owners from unauthorised copying of their work (literary, dramatic, musical and artistic), and provides them with exclusive rights to how their work is used.

During your study with us we will endeavour to educate you on copyright use, including referencing, approved copying, and proper use of electronic material and downloadable music.

Infringement of copyright regulations may result in civil or criminal prosecution against you, as the learner, and/or Ara. Infringement by you, as a learner, may also be considered academic misconduct and result in penalties.

For more information about Copyright, see [Copyright](#).

# Kā tū whare me kā rauemi

## Facilities and resources



## Kā tū whare - Facilities

### Faculty related Health and Safety

Please refer to the [Learner Information Handbook](#) for general Health and Safety information and evacuation details. In an emergency advise a staff member, and if no one is available phone 111.

Refer to your tutors and laboratory managers for instructions and specific Health & Safety information related to laboratory and field activities.

## Kā rauemi - Resources

### Noticeboards

<b>City Campus</b>	Learner information, including employment opportunities, will be posted on the noticeboards in Paxus House and/or in clinic rooms
<b>Timaru Campus</b>	Learner information, including employment opportunities, will be posted on the noticeboards in clinic rooms

### Lockers

There are a limited amount of lockers available that are shared with other users on a daily basis. Your own padlock may need to be supplied.

Should you wish to use a locker you must supply your own lock. It is recommended you use a combination lock to remove the stress of lost or forgotten keys.

# Appendix 1

## Equipment Requirements

### NZ3444 New Zealand Certificate in Beauty Therapy (Level 4)

The uniforms and equipment for this course constitute a significant investment on your part and form the basis of the personal equipment requirements for your future career. Sound security and care of these items is essential and is your responsibility from the time of purchase. All equipment and uniforms should be named where possible.

Ara will provide each learner with a Beauty kit, uniform, name badge and textbooks.

It is recommended each learner purchase the below supplies.

**Please speak with your tutor prior to purchasing to ensure you get the correct products. Each learner will be required to purchase at home products, for skincare practice. Tutors will advise you what products are required during your Orientation session.**

#### Equipment

**Beauty Kit – Is provided, but you will need to provide the following items:**

##### **Semester One:**

- Brow and lash tinting colours – light brown, dark brown and blue black (black in provided kit)

##### **Semester Two:**

- Make up brushes a set of 10 (compulsory)
- Make up triangles/sponges pack

#### **Disclaimer:**

All care and attention have been given to ensure the information in this document is accurate at the time of publishing. Ara does not take responsibility for any loss or harm incurred as a result of reliance upon any information which is incorrect or out of date. This document was last updated on 26 June 2026.